

(ZETTR4.ZETTR) 24137

AL-119 (FAA)

DETROIT METRO WAYNE COUNTY (DTW)

ZETTR FOUR DEPARTURE (RNAV) Transition Routes

DETROIT, MICHIGAN

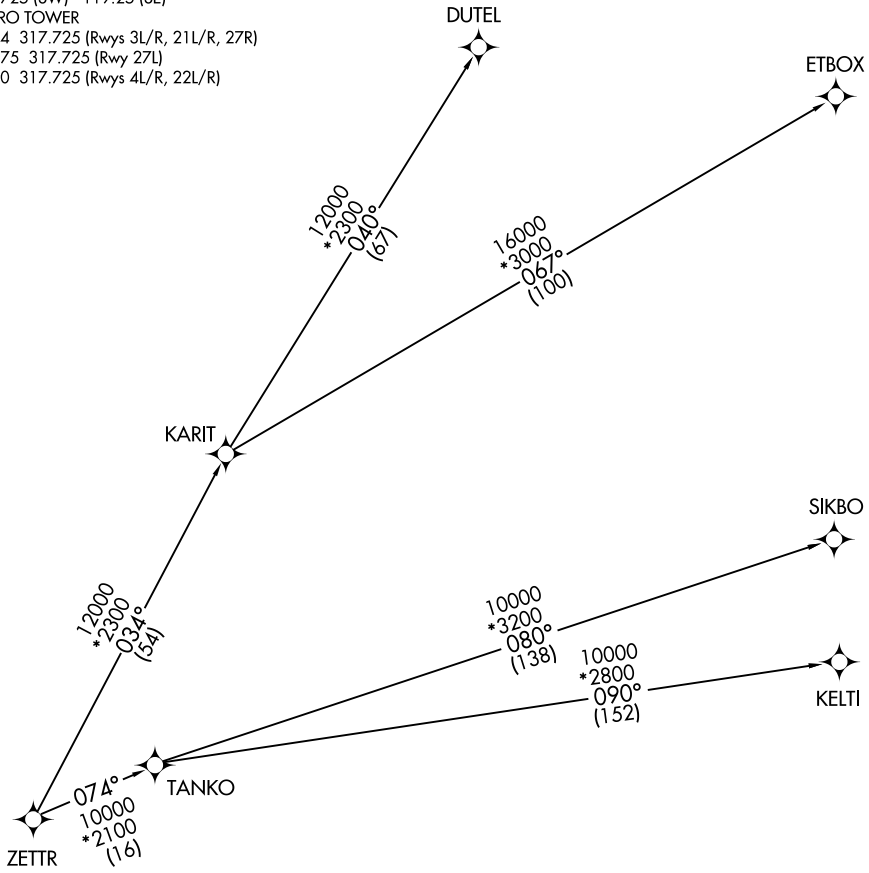
DETROIT DEP CON
 125.525 284.0 (Rwys 22L/R, 27L/R)
 132.025 284.0 (Rwys 3L/R, 4L/R, 21L/R)
 D-ATIS 118.125
 CLNC DEL 120.65
 CPDLC
 GND CON
 121.8 (NW) 119.45 (NE)
 132.725 (SW) 119.25 (SE)
 METRO TOWER
 118.4 317.725 (Rwys 3L/R, 21L/R, 27R)
 128.75 317.725 (Rwy 27L)
 135.0 317.725 (Rwys 4L/R, 22L/R)

RNAV 1 - DME/DME/IRU or GPS.
 RADAR required.

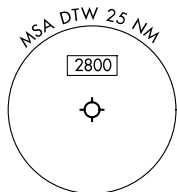
**TOP ALTITUDE:
 17000**

EC-1, 20 MAR 2025 to 17 APR 2025

EC-1, 20 MAR 2025 to 17 APR 2025



NOTE: Turbojet departures at/at above 10000, maintain 280K until advised by ATC.
 NOTE: TANKO Transition: For use by CYYZ area arrivals only, or as assigned by ATC.



NOTE: Chart not to scale.

(CONTINUED ON FOLLOWING PAGE)

ZETTR FOUR DEPARTURE (RNAV) Transition Routes

DETROIT, MICHIGAN

(ZETTR4.ZETTR) 16MAY24

DETROIT METRO WAYNE COUNTY (DTW)