

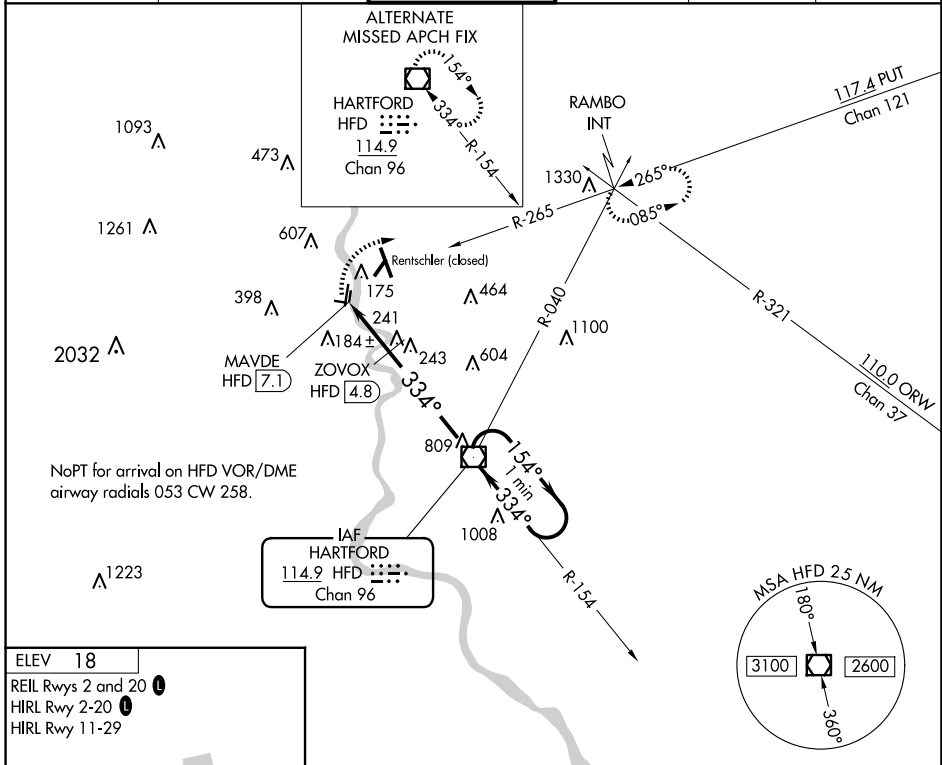
VOR/DME HFD 114.9 Chan 96	APP CRS 334°	Rwy Idg TDZE Apt Elev 18	N/A N/A
---	------------------------	---------------------------------------	------------

VOR-A
HARTFORD-BRAINARD (HF'D)

▼ Helicopter visibility reduction below 1 SM NA. When Rwy 2 VGSi inop, Circling to Rwy 2 NA at night. Circling to Rwy 11 and 29 NA at night. When Rwy 20 VGSi inop, Circling to Rwy 20 NA at night.

▲ MISSED APPROACH: Climbing right turn to 2500 on heading 100° and PUT VOR/DME R-265 to RAMBO INT and hold.

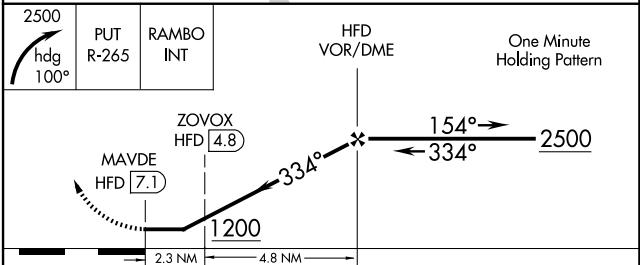
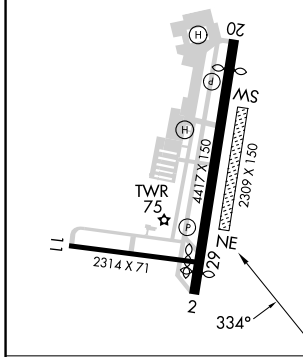
ATIS 126.45	BRADLEY APP CON 127.8 269.325	BRAINARD TOWER ★ 119.6 (CTAF) 0 248.2	GND CON 121.6	CLNC DEL 121.6	UNICOM 122.95
-----------------------	---	--	-------------------------	--------------------------	-------------------------



NE-1, 20 MAR 2025 to 17 APR 2025

NE-1, 20 MAR 2025 to 17 APR 2025

ELEV 18
REIL Rws 2 and 20
HIRL Rwy 2-20
HIRL Rwy 11-29



CATEGORY	A	B	C	D
CIRCLING	1200-1¼ 1182 (1200-1¼)	1200-1½ 1182 (1200-1½)	1200-3 1182 (1200-3)	
ZOVOX FIX MINIMUMS (DME REQUIRED)				
CIRCLING	580-1 562 (600-1)	900-1¼ 882 (900-1¼)	920-2¾ 902 (1000-2¾)	920-3 902 (1000-3)

FAF to MAP 7.1 NM					
Knots	60	90	120	150	180
Min:Sec	7:06	4:44	3:33	2:50	2:22