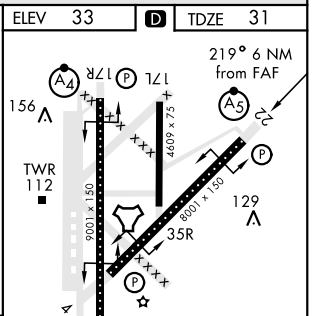
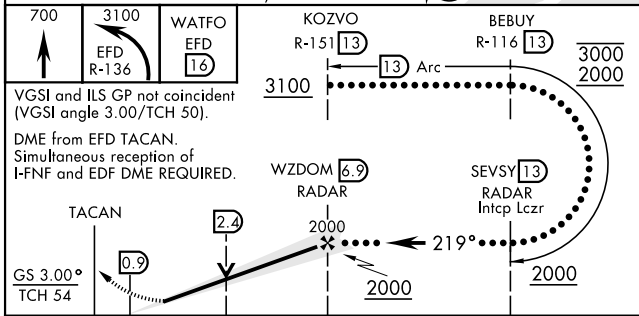
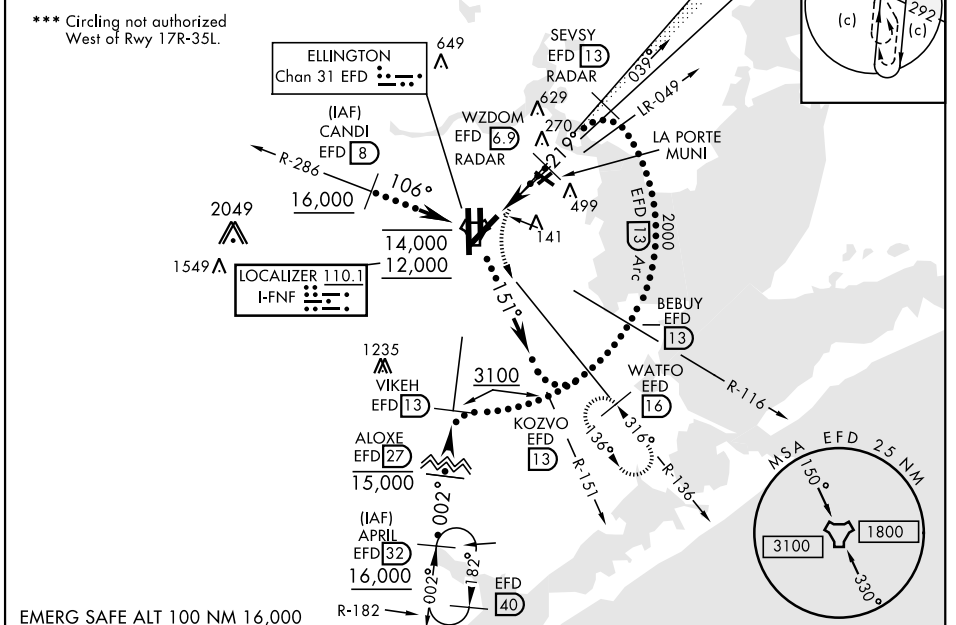


HI-ILS Y or LOC Y RWY 22

LOC I-FNF 110.1	APCH CRS 219°	Rwy Ildg TDZE Arprt Elev 8001 31 33	AL-197 [USAF]	ELLINGTON (KEFD)
DME required. RADAR required for procedure entry.			MALSR	MISSED APPROACH: Climb to 700 then climbing left turn to 3100 on EFD TACAN R-136 to WATFO/EFD 16 DME and hold.
*When ALS inop, increase CAT E RVR to 40. **When ALS inop, increase CAT E vis to 1½ mile.			(A5)	

ATIS 135.575 269.9	HOUSTON APP CON 134.45 284.0	TOWER 126.05 253.5	GND CON 121.6 275.8
------------------------------	--	------------------------------	-------------------------------

EFD TACAN	N29°36.36' W95°09.58'
CANDI	N29°39.24' W95°18.17'
APRIL	N29°04.53' W95°14.05'
WATFO	N29°23.90' W94°58.07'



CATEGORY	C	D	E
S-ILS 22 *	231/24	200 (200-½)	
S-LOC 22 **	560/55	529 (600-1)	
CIRCLING ***	580-1½ 547 (600-1½)	640-2 607 (700-2)	700-2¼ 667 (700-2¼)

HIRL Rwy 4-22 and 17R-35L
TDZL/CL Rwy 17R, 22 and 35L

HI-ILS Y or LOC Y RWY 22

SC-5, 20 MAR 2025 to 17 APR 2025

SC-5, 20 MAR 2025 to 17 APR 2025