

# KARR SEVEN DEPARTURE (RNAV)

NOTE: Chart not to scale.

SC-5, 20 MAR 2025 to 17 APR 2025

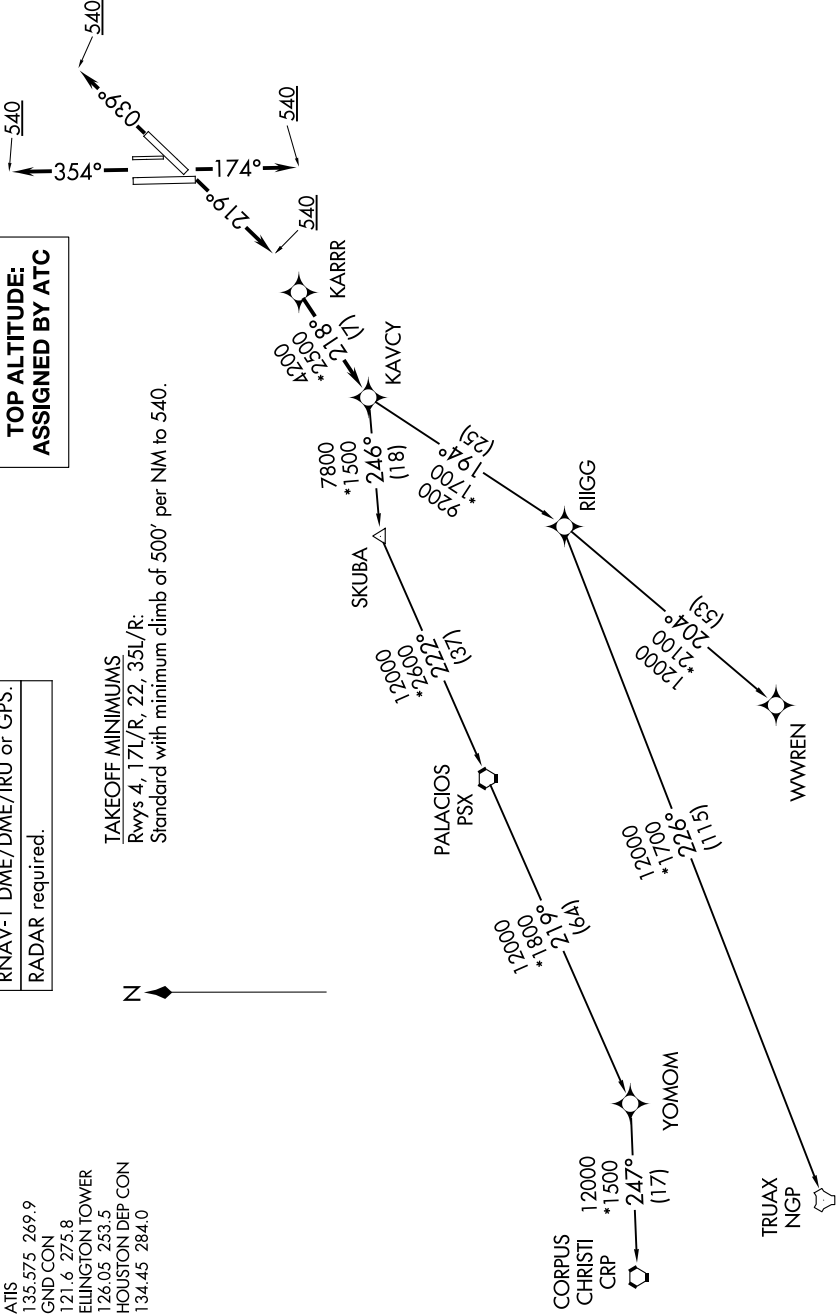
RNAV-1 DME/DME/IRU or GPS.  
RADAR required.

ATIS 135.575 269.9  
GND CON 121.6 275.8  
ELLINGTON TOWER 126.05 253.5  
HOUSTON DEP CON 134.45 284.0

### TAKEOFF MINIMUMS

Rwys 4, 17L/R, 22, 35L/R:  
Standard with minimum climb of 500' per NM to 540.

### TOP ALTITUDE: ASSIGNED BY ATC



(NARRATIVE ON FOLLOWING PAGE)

SC-5, 20 MAR 2025 to 17 APR 2025

# KARR SEVEN DEPARTURE (RNAV)