

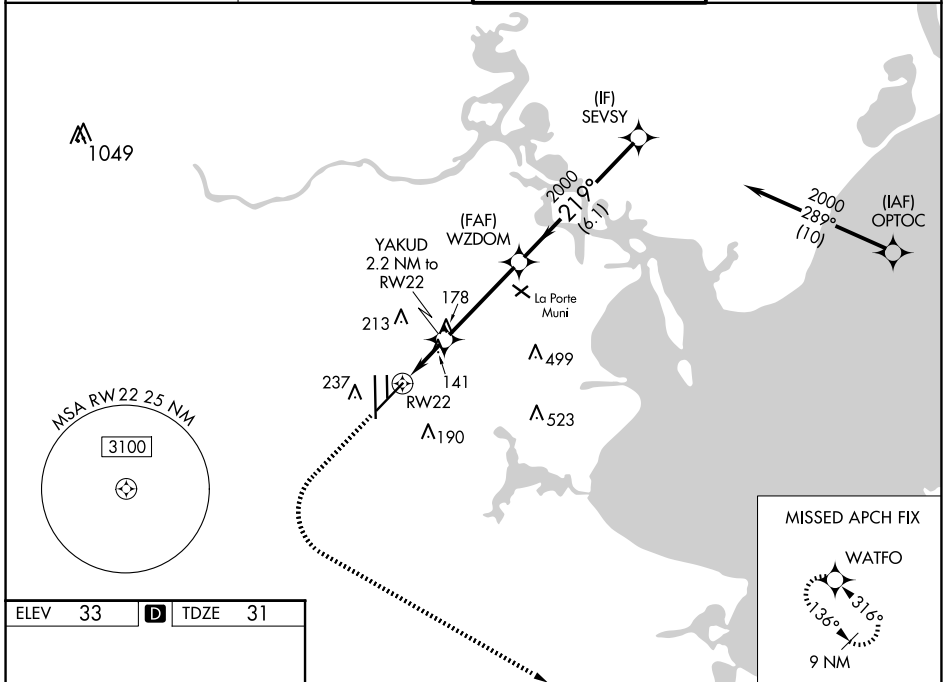
WAAS CH 61111	APP CRS 219°	Rwy Idg 8001
W22A		TDZE 31
		Apt Elev 33

RNAV (GPS) RWY 22

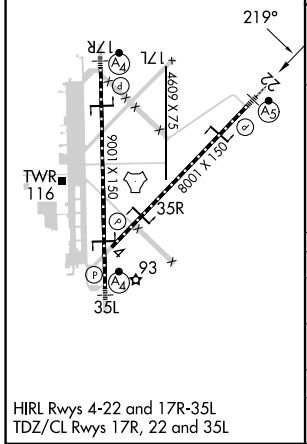
ELLINGTON (EFD)

RNP APCH.	MALSR	MISSED APPROACH: Climb to 500 then climbing left turn to 3100 direct WATFO and hold.
<p>⚠ Circling NA west of Rwy 17R - 35L. For uncompensated Baro-VNAV systems, LNAV/VNAV NA below -1.5°C or above 54°C. For inop ALS, increase LPV Cat E visibility to RVR 4000, LNAV/VNAV all Cats visibility to RVR 4500, and LNAV Cats C/D/E visibility to RVR 5500.</p>		

ATIS 135.575 269.9	HOUSTON APP CON 134.45 284.0	ELLINGTON TOWER 126.05 253.5	GND CON 121.6 275.8
------------------------------	--	--	-------------------------------



ELEV 33	D	TDZE 31
---------	----------	---------



500	3100	WATFO	VGSi and RNAV glidepath not coincident (VGSi Angle 3.00/TCH 50).		
*LNAV only.		YAKUD 2.2 NM to RW22	WZDOM 2000	SEVSY 2000	
1 NM to RW22		780	2000	219°	GP 3.00° TCH 54
1 NM		1.2 NM	3.8 NM	6.1 NM	
CATEGORY	A	B	C	D	E
LPV	DA	231/18		200 (200-1/2)	
LNAV/VNAV	DA	341/24		310 (400-1/2)	
LNAV MDA	400/24	369 (400-1/2)		400/35 369 (400-3/4)	
C CIRCLING	500-1	467 (500-1)	580-1 1/2 547 (600-1 1/2)	640-2 607 (700-2)	700-2 1/4 667 (700-2 1/4)

HIRL Rwy 4-22 and 17R-35L
TDZ/CL Rwy 17R, 22 and 35L

HOUSTON, TEXAS
Amdt 2D 15AUG19

29°36'N-95°10'W

ELLINGTON (EFD) RNAV (GPS) RWY 22

SC-5, 20 MAR 2025 to 17 APR 2025

SC-5, 20 MAR 2025 to 17 APR 2025