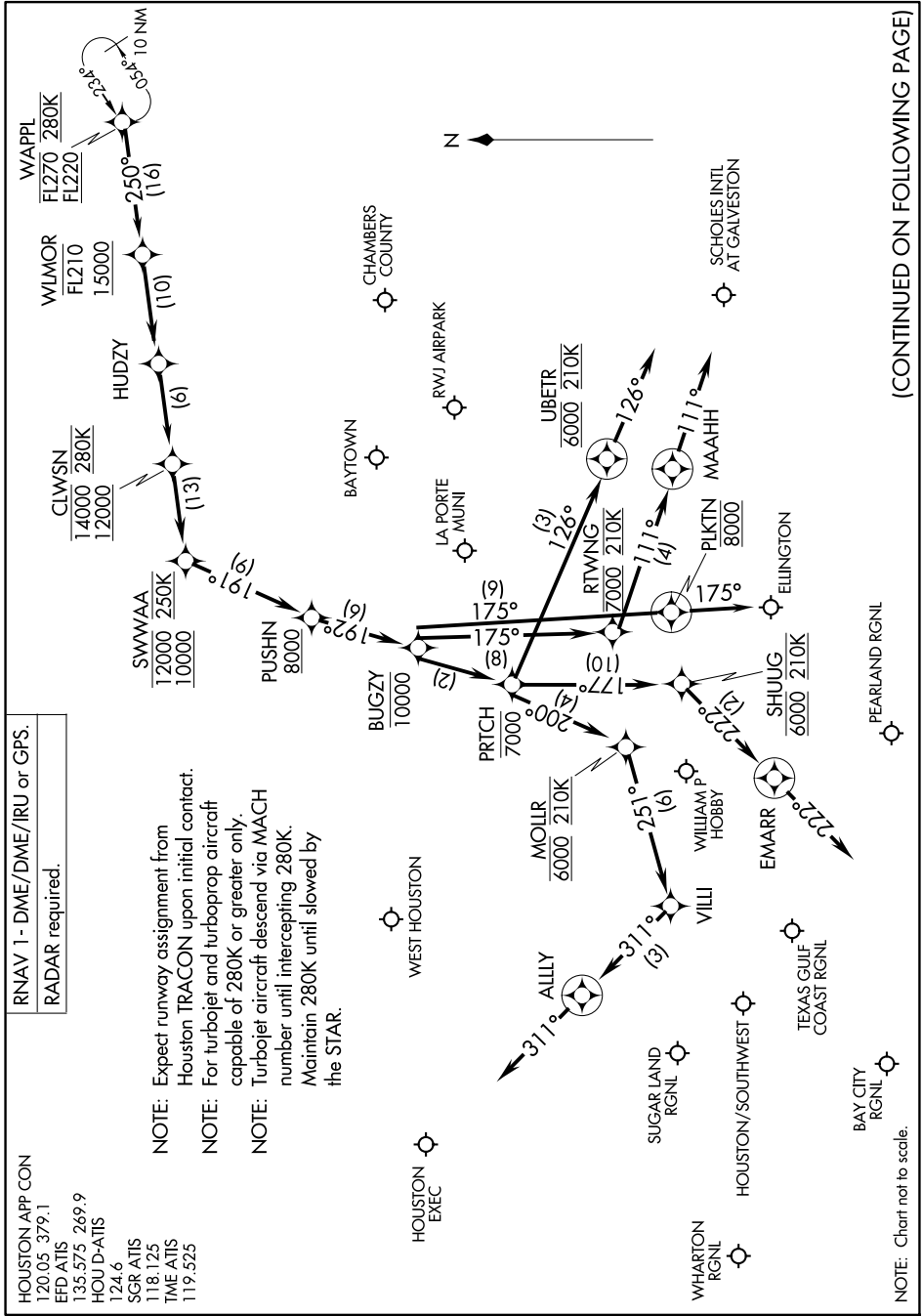


# WAPPL SIX ARRIVAL (RNAV) Arrival Routes

HOUSTON, TEXAS

SC-5, 20 MAR 2025 to 17 APR 2025



RNAV 1 - DME/DME/IRU or GPS.  
 RADAR required.

- NOTE: Expect runway assignment from Houston TRACON upon initial contact.
- NOTE: For turbojet and turboprop aircraft capable of 280K and greater only.
- NOTE: Turbojet aircraft descend via MACH number until intercepting 280K. Maintain 280K until slowed by the STAR.

HOUSTON APP CON  
 120.05 379.1  
 EFD ATIS  
 135.575 269.9  
 HOU D-ATIS  
 124.6  
 SGR ATIS  
 118.125  
 TME ATIS  
 119.525

(CONTINUED ON FOLLOWING PAGE)

SC-5, 20 MAR 2025 to 17 APR 2025

# WAPPL SIX ARRIVAL (RNAV) Arrival Routes

HOUSTON, TEXAS

NOTE: Chart not to scale.