

CHIEF NINE DEPARTURE

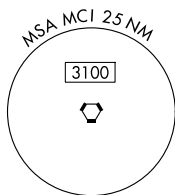
AL-213 (FAA)

CHARLES B WHEELER DOWNTOWN (MKC)
KANSAS CITY, MISSOURI

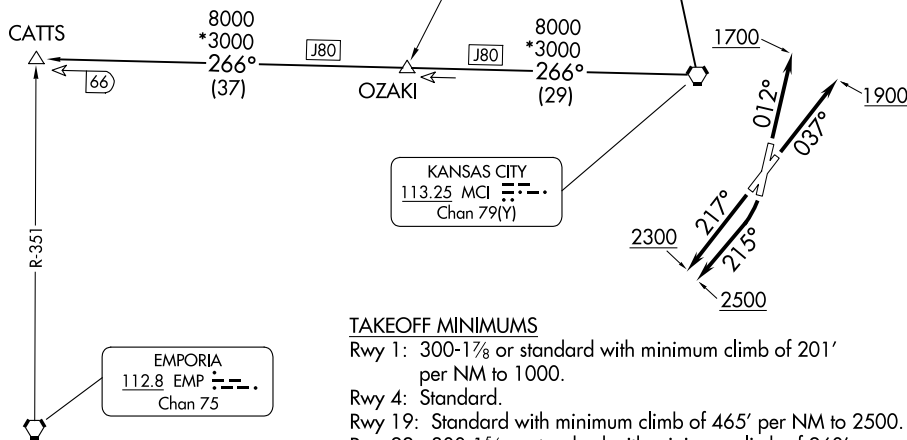
**TOP ALTITUDE:
10000**

RADAR required.

KANSAS CITY DEP CON
118.4 307.35
ATIS
120.75
CLNC DEL
121.9



ST. JOSEPH
115.5 STJ
Chan 102



KANSAS CITY
113.25 MCI
Chan 79(Y)

EMPORIA
112.8 EMP
Chan 75

TAKEOFF MINIMUMS

- Rwy 1: 300-1 $\frac{3}{8}$ or standard with minimum climb of 201' per NM to 1000.
- Rwy 4: Standard.
- Rwy 19: Standard with minimum climb of 465' per NM to 2500.
- Rwy 22: 300-1 $\frac{3}{8}$ or standard with minimum climb of 260' per NM to 1000.

NOTE: Chart not to scale.

DEPARTURE ROUTE DESCRIPTION

- TAKEOFF RUNWAY 1: Climb on heading 012° to 1700, thence. . .
 - TAKEOFF RUNWAY 4: Climb on heading 037° to 1900, thence. . .
 - TAKEOFF RUNWAY 19: Climbing right turn heading 215° to 2500, thence. . .
 - TAKEOFF RUNWAY 22: Climb on heading 217° to 2300, thence. . .
- . . . climb on assigned heading for RADAR vectors to appropriate route. Maintain 10000 or as assigned by ATC, expect filed altitude 10 minutes after departure.

CATTS TRANSITION (CHIEF9.CATTS): From over MCI VORTAC on MCI R-266 to CATTS.

ST. JOSEPH TRANSITION (CHIEF9.STJ): From over MCI VORTAC on MCI R-343 and STJ R-160 to STJ VORTAC.

CHIEF NINE DEPARTURE

NC-3, 20 MAR 2025 to 17 APR 2025

NC-3, 20 MAR 2025 to 17 APR 2025