

ANAHEIM ONE DEPARTURE

AL-236 (FAA)

LONG BEACH (DAUGHERTY FLD) (LGB)
LONG BEACH, CALIFORNIA

SW-3, 20 MAR 2025 to 17 APR 2025

TOP ALTITUDE: ASSIGNED BY ATC

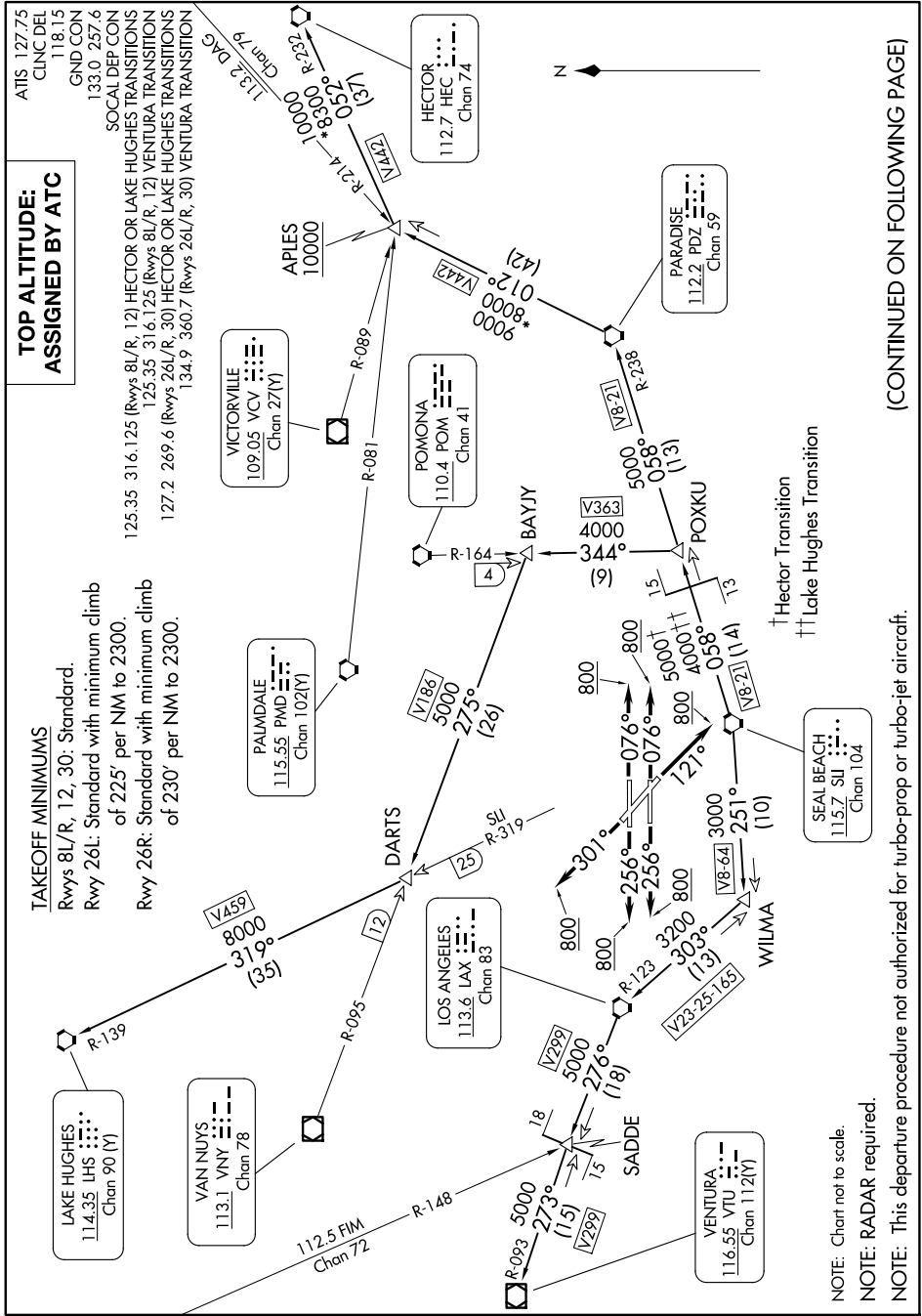
TAKEOFF MINIMUMS

Rwys 8/L/R, 12, 30: Standard.

Rwy 26L: Standard with minimum climb of 225' per NM to 2300.

Rwy 26R: Standard with minimum climb of 230' per NM to 2300.

ATIS 127.75
CLNC DEL 118.15
GND CON 133.0 257.6
SOCAL DEP CON
125.35 316.125 (Rwys 8/L/R, 12) HECTOR OR LAKE HUGHES TRANSITIONS
125.35 316.125 (Rwys 8/L/R, 12) VENTURA TRANSITION
127.2 269.6 (Rwys 26L/R, 30) HECTOR OR LAKE HUGHES TRANSITIONS
134.9 360.7 (Rwys 26L/R, 30) VENTURA TRANSITION



(CONTINUED ON FOLLOWING PAGE)

- NOTE: Chart not to scale.
- NOTE: RADAR required.
- NOTE: This departure procedure not authorized for turbo-prop or turbo-jet aircraft.

SW-3, 20 MAR 2025 to 17 APR 2025