

SW-3, 20 MAR 2025 to 17 APR 2025

ARRIVAL ROUTE DESCRIPTION

TCUPS TRANSITION (TCUPS.BAUBB3)

TILLT TRANSITION (TILLT.BAUBB3)

From BAUBB on track 087° to cross STYFF between 7000 and 9000.

LANDING RUNWAY 12: From STYFF on track 078° to cross KAYNN between 5000 and 7000, then on track 015° to cross PADDR between 5000 and 6000 and at 200K, then on track 009° to QGATE, then on track 332° to cross BREKE at 3000. Expect RNAV (RNP) RWY 12 approach.

LANDING RUNWAYS 26R, 30: From STYFF on track 078° to cross KAYNN between 5000 and 7000, then on track 055° to cross LAXBB at or below 5000 and at 200K, then on track 055° to cross ALBAS at 4000, then on track 020° to cross EZKEL at 4000, then on track 020°. Expect RNAV (RNP) Y RWY 30 or RADAR vectors to final approach course.

LOST COMMUNICATIONS

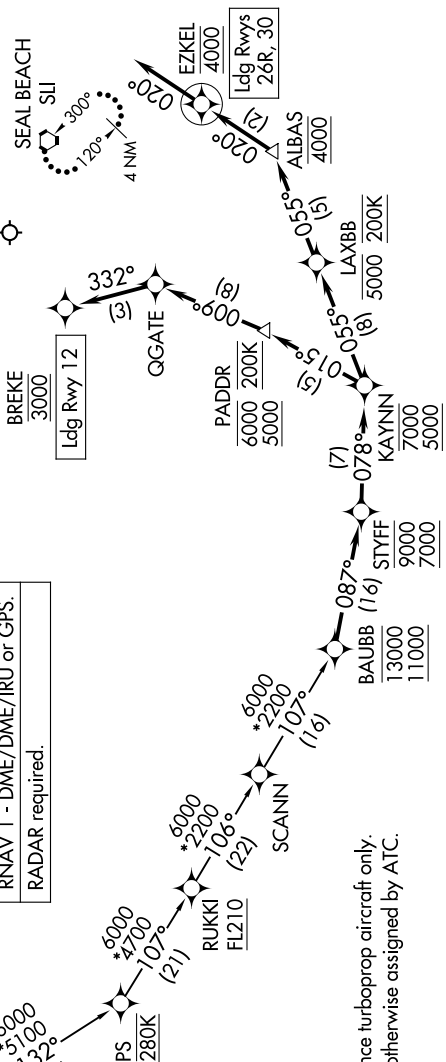
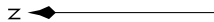
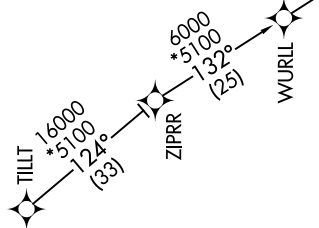
RUNWAYS 26R, 30: After ALBAS proceed on the RNAV (RNP) Y RWY 30 or ILS or LOC RWY 30 approach. RUNWAY 12: After BREKE proceed on the RNAV (RNP) RWY 12 approach.

If unable approach to LGB, after ALBAS/BREKE climb to 4000 direct SLI VORTAC and hold.

RNAV 1 - DME/DME/IRU or GPS.
RADAR required.

SOCAL APP CON
127.4 263.025
ATIS
127.75

LONG BEACH TOWER*
120.5 257.6 (Rwy 12)
119.4 257.6 (Rwy 30)



NOTE: Jet and high performance turboprop aircraft only.
NOTE: Expect Rwy 30 unless otherwise assigned by ATC.

NOTE: Chart not to scale.

SW-3, 20 MAR 2025 to 17 APR 2025