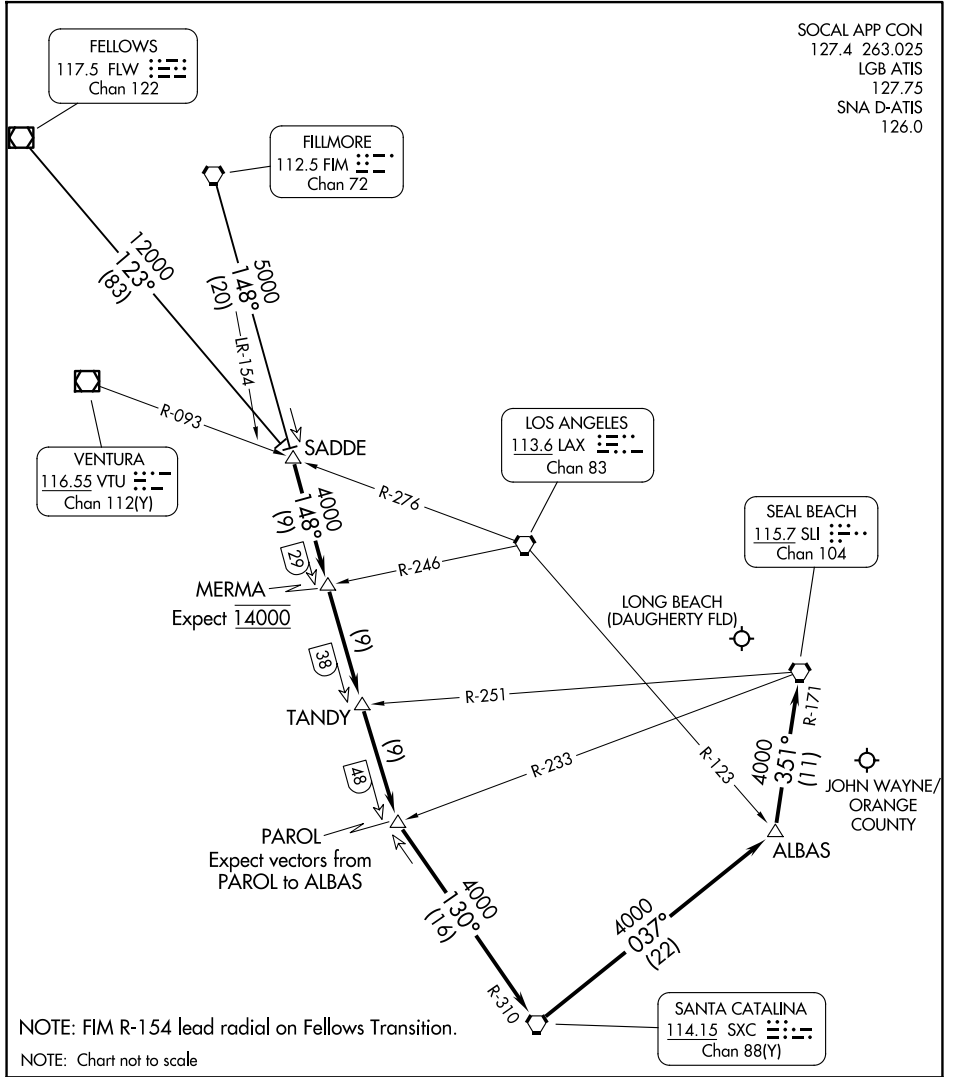


SOCAL APP CON  
127.4 263.025  
LGB ATIS  
127.75  
SNA D-ATIS  
126.0



SW-3, 20 MAR 2025 to 17 APR 2025

SW-3, 20 MAR 2025 to 17 APR 2025

NOTE: FIM R-154 lead radial on Fellows Transition.  
NOTE: Chart not to scale

ARRIVAL ROUTE DESCRIPTION

**FELLOWS TRANSITION (FLW.TANDY5):** From over FLW VOR/DME on FLW R-123 to SADDE. Thence. . . .  
**FILLMORE TRANSITION (FIM.TANDY5):** From over FIM VORTAC on FIM R-148 to SADDE. Thence. . . .  
. . . .From over SADDE on FIM R-148 to PAROL. From over PAROL on SXC R-310 to SXC VORTAC. Then from over SXC VORTAC on SXC R-037 to ALBAS. Then from ALBAS on SLI R-171 to SLI VORTAC.