

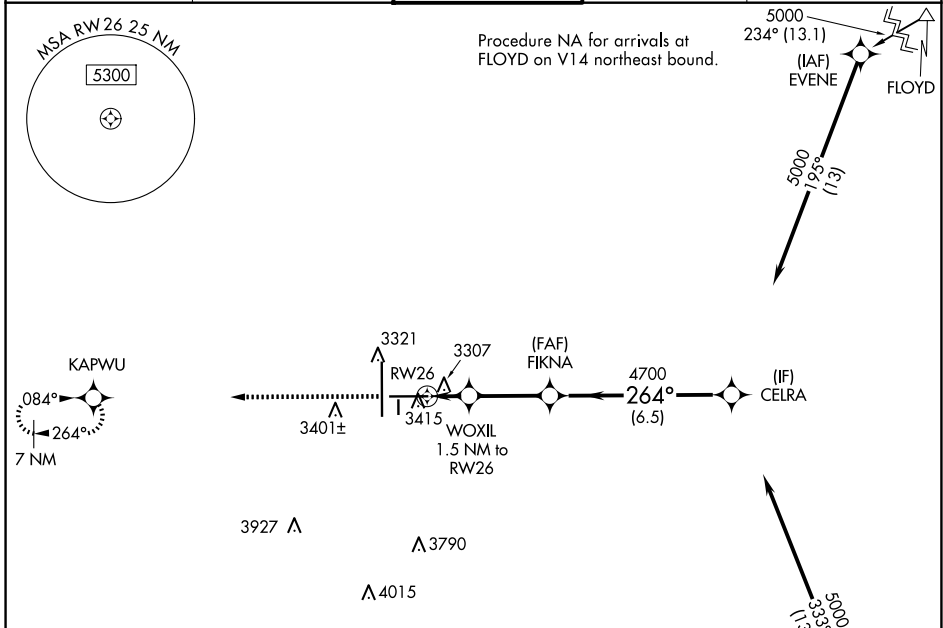
WAAS CH 45528 W26A	APP CRS 264°	Rwy Idg TDZE Apt Elev	8003 3256 3282
--	------------------------	-----------------------------	---

RNAV (GPS) RWY 26

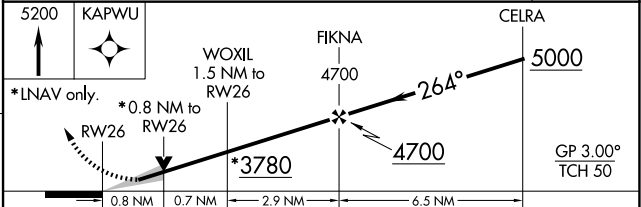
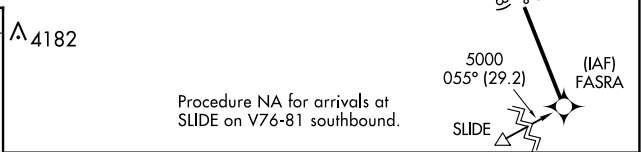
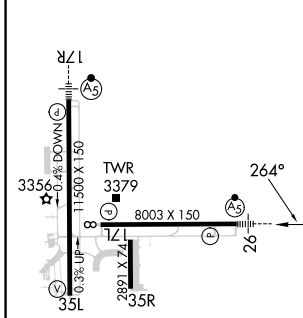
LUBBOCK PRESTON SMITH INTL (LBB)

RNP APCH.	MALSRS	MISSED APPROACH: Climb to 5200 direct KAPWU and hold.
▼ For uncompensated Baro-VNAV systems, LNAV/VNAV NA below -10°C or above 52°C. ▲ For inop ALS, increase LPV Cat E visibility to RVR 4000; increase LNAV/VNAV Cat E visibility to RVR 5000; and increase LNAV Cat C/D/E visibilities to RVR 4500. **RVR 1800 authorized with use of FD or AP or HUD to DA.		

ATIS 125.3 270.275	LUBBOCK APP CON 119.2 351.8	LUBBOCK TOWER 120.5 239.3	GND CON 121.9 348.6	CLNC DEL 125.8 281.55
------------------------------	---------------------------------------	-------------------------------------	-------------------------------	---------------------------------



ELEV 3282	D	TDZE 3256
-----------	----------	-----------



CATEGORY	A	B	C	D	E
LPV DA**		3456/24	200 (200-½)		
LNAV/VNAV DA		3579/26	323 (300-½)		
LNAV MDA		3560/24	304 (300-½)		
C CIRCLING	3720-1	3740-1	3880-1½	3940-2	4100-3
	438 (500-1)	458 (500-1)	598 (600-1½)	658 (700-2)	818 (900-3)