

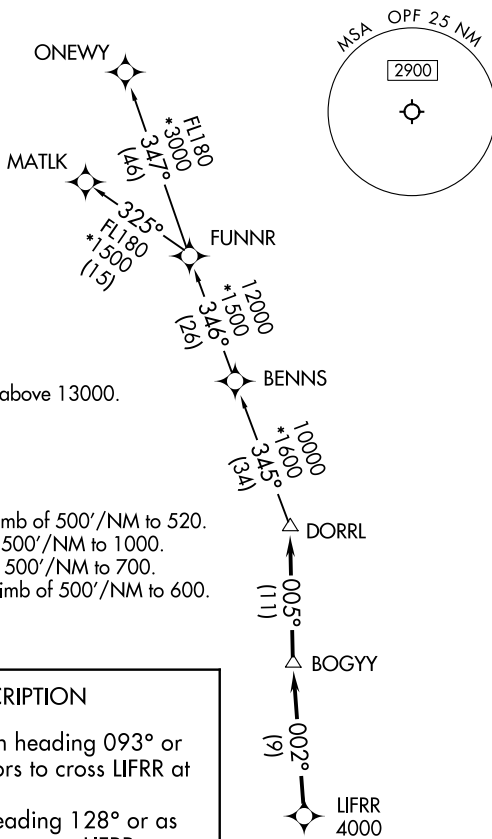
DORRL TWO DEPARTURE (RNAV)

MIAMI DEP CON  
119.45 290.325  
ATIS  
125.9  
CLNC DEL  
119.2  
GND CON  
120.025  
OPA LOCKA TOWER ★  
134.675 (CTAF)

**TOP ALTITUDE:  
ASSIGNED BY ATC**

RNAV 1 - DME/DME/IRU or GPS.

RADAR required.



NOTE: For turbo-props/props filed at or above 13000.

## TAKEOFF MINIMUMS

Rwys 27L, 30: Standard with minimum climb of 500'/NM to 520.

Rwy 9L: Standard with minimum climb of 500'/NM to 1000.

Rwy 9R: Standard with minimum climb of 500'/NM to 700.

Rwys 12, 27R: Standard with minimum climb of 500'/NM to 600.

## DEPARTURE ROUTE DESCRIPTION

TAKEOFF RUNWAYS 9L/R: Climb on heading 093° or as assigned by ATC for RADAR vectors to cross LIFRR at or above 4000, thence. . . .

**TAKEOFF RUNWAY 12:** Climb on heading 128° or as assigned by ATC for RADAR vectors to cross LIFRR at or above 4000, thence. . .

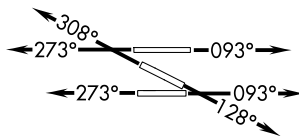
TAKEOFF RUNWAYS 27L/R: Climb on heading 273° or as assigned by ATC for RADAR vectors to cross LIFRR at or above 4000, thence. . . .

**TAKEOFF RUNWAY 30:** Climb on heading 308° or as assigned by ATC for RADAR vectors to cross LIFRR at or above 4000, thence. . . .

...on track 002° to BOGYY, then on track 005° to DORRL then on (transition), maintain altitude as assigned by ATC, expect filed altitude 10 minutes after departure.

MATLK TRANSITION (DORRL2.MATLK)

## ONEWY TRANSITION (DORRL2.ONEWY)



NOTE: Chart not to scale.

DORRL TWO DEPARTURE (RNAV)

(DORRL2.DORRL) 21MAR24

MIAMI, FLORIDA

MIAMI-OPA LOCKA EXEC (OPF)

SE-3, 20 MAR 2025 to 17 APR 2025