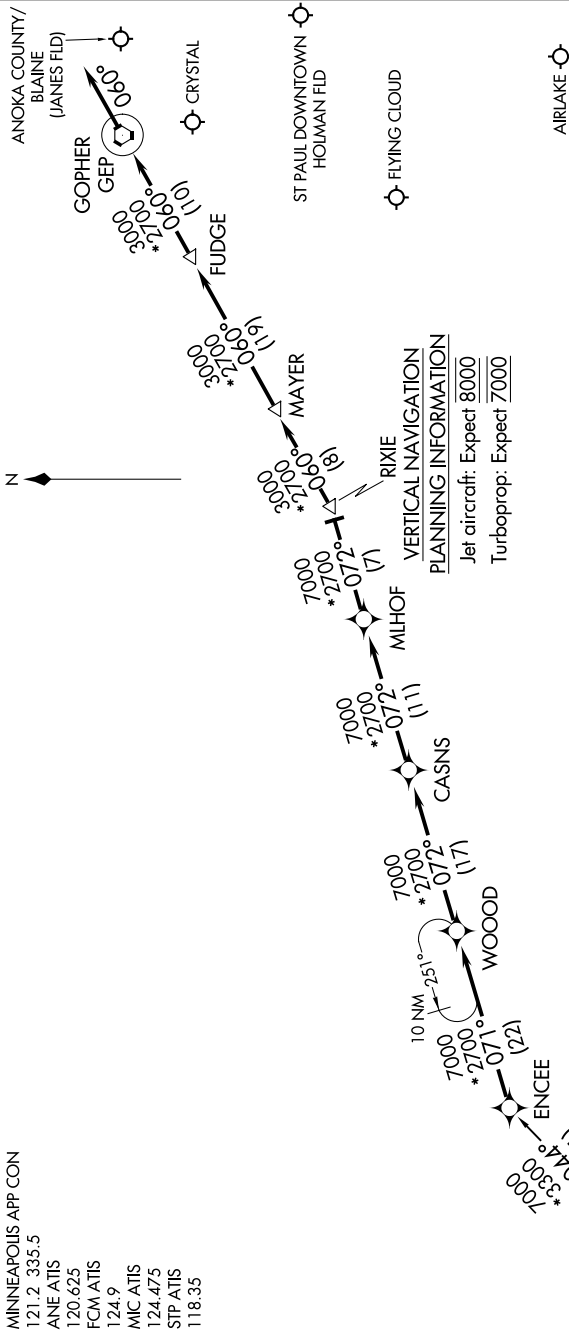


NC-1, 20 MAR 2025 to 17 APR 2025

MINNEAPOLIS APP CON  
 121.2 335.5  
 ANE ATIS  
 120.625  
 FCM ATIS  
 124.9  
 MIC ATIS  
 124.475  
 STP ATIS  
 118.35



NOTE: GPS required.  
 NOTE: RADAR required.

ARRIVAL ROUTE DESCRIPTION

SIoux FALLS TRANSITION (FSD.ENCEE3)

From over ENCEE as depicted to RIXIE, thence as depicted to GEP VORTAC.  
 Thence heading 060°, expect RADAR vectors to final approach course.

NOTE: Chart not to scale.

NC-1, 20 MAR 2025 to 17 APR 2025