

WAAS CH <b>50123</b> <b>W32A</b>	APP CRS <b>326°</b>	Rwy Idg TDZE Apt Elev	<b>6109</b> <b>704</b> <b>705</b>
--	------------------------	-----------------------------	---

# RNAV (GPS) RWY 32

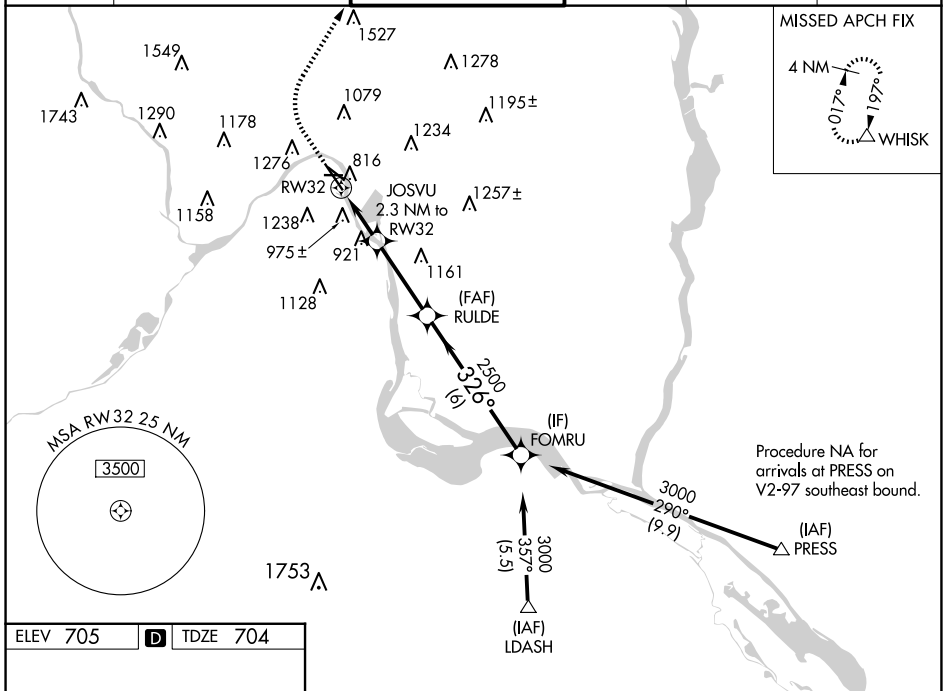
ST PAUL DOWNTOWN HOLMAN FLD (STP)

RNP APCH - GPS.

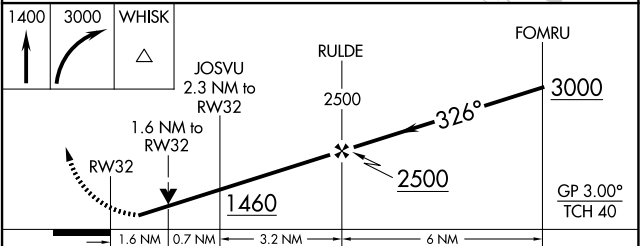
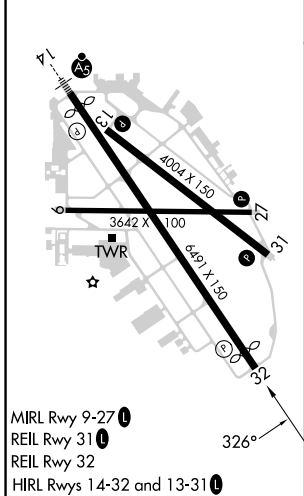
**⚠** Rwy 32 helicopter visibility reduction below  $\frac{3}{4}$  SM NA.  
**⚠** For uncompensated Baro-VNAV systems, LNAV/VNAV NA below -30°C  
 below -21°C or above 54°C.

MISSED APPROACH: Climb to 1400 then climbing right turn to 3000 direct WHISK and hold.

ATIS <b>118.35</b>	MINNEAPOLIS APP CON <b>121.2 335.65</b>	ST. PAUL TOWER ★ <b>119.1(CTAF) 257.8</b>	GND CON <b>121.675</b>	CLNC DEL <b>121.675</b>	UNICOM <b>122.95</b>
-----------------------	--	--	---------------------------	----------------------------	-------------------------



ELEV 705	<b>D</b>	TDZE 704
----------	----------	----------



CATEGORY	A	B	C	D
LPV DA		1031/50	327 (400-1)	
LNAV/VNAV DA		1258-1 $\frac{5}{8}$	554 (600-1 $\frac{5}{8}$ )	
LNAV MDA	1240/55	536 (600-1)	1240-1 $\frac{1}{2}$	536 (600-1 $\frac{1}{2}$ )
<b>C</b> CIRCLING	1580-1 $\frac{1}{4}$	875 (900-1 $\frac{1}{4}$ )	1580-2 $\frac{1}{2}$ 875 (900-2 $\frac{1}{2}$ )	1580-2 $\frac{3}{4}$ 875 (900-2 $\frac{3}{4}$ )

NC-1, 20 MAR 2025 to 17 APR 2025

NC-1, 20 MAR 2025 to 17 APR 2025