

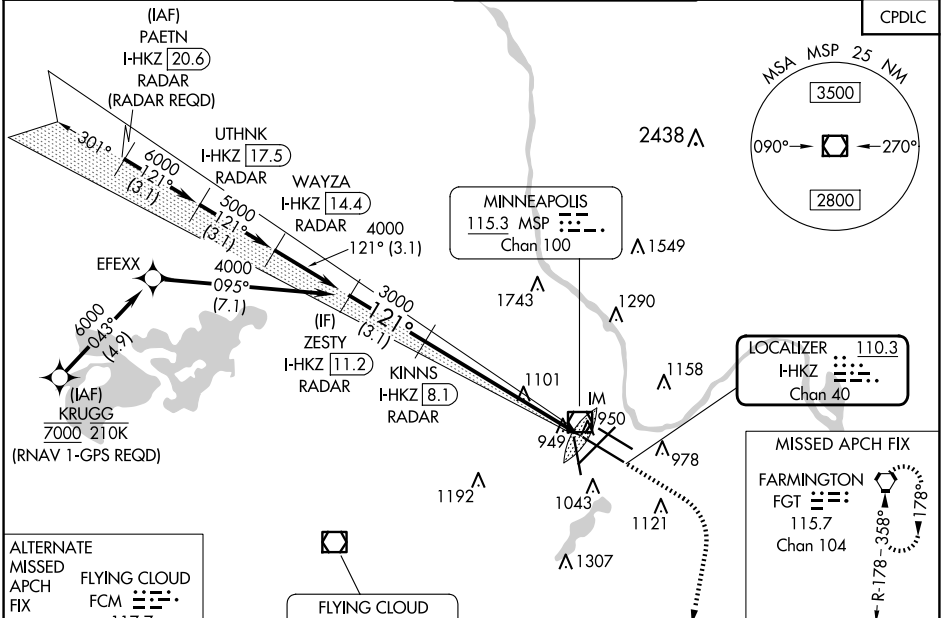
| | | |
|---|------------------------|--|
| LOC/DME I-HKZ 110.3 Chan 40 | APP CRS 121° | Rwy ldg 10000 TDZE 842 Apt Elev 842 |
|---|------------------------|--|

ILS RWY 12R (SA CAT I)

MINNEAPOLIS-ST PAUL INTL/WOLD-CHAMBERLAIN (MSP)

| | | |
|---|---------|---|
| ⚠ DME or RADAR required. Simultaneous approach authorized with Rwy 12L. Requires specific OPSPEC, MSPEC, or LOA approval and use of HUD to DH. | ALSIF-2 | MISSED APPROACH: Climb to 1300 then climbing right turn to 3000 direct FGT VORTAC and hold. |
|---|---------|---|

| | | | | |
|---|--|---|---|--------------------------|
| D-ATIS ARR 135.35 239.275 DEP 120.8 | MINNEAPOLIS APP CON 118.725 335.65 (Rwy 35) 119.3 335.65 (12L-30R, 4-22, 17) 126.95 335.65 (12R-30L) | MINNEAPOLIS TOWER 123.675 273.55 (17-35) 123.95 273.55 (12L-30R) 126.7 273.55 (12R-30L, 4-22) | GND CON N 121.8 348.6 S 121.9 348.6 W 127.925 348.6 | CLNC DEL 133.2 |
|---|--|---|---|--------------------------|



ALTERNATE MISSED APCH FIX

FLYING CLOUD FCM

117.7 Chan 124

R-265-085°

FLYING CLOUD 117.7 FCM

Chan 124

LOCALIZER 110.3

I-HKZ

Chan 40

MISSED APCH FIX

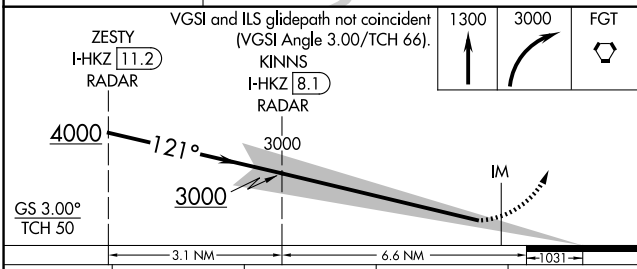
FARMINGTON

115.7

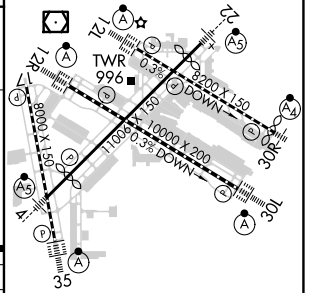
Chan 104

R-178-358°

| | |
|----------|-------------------|
| ELEV 842 | D TDZE 842 |
|----------|-------------------|



| | | | | |
|-----------|----------------------|---|---|---|
| CATEGORY | A | B | C | D |
| S-ILS 12R | RA 168/14 150 DA 992 | | | |



SA CATEGORY I ILS - SPECIAL AIRCREW & AIRCRAFT CERTIFICATION REQUIRED

HIRL all Rwws
REIL Rwy 17
TDZ/CL Rwws 12L, 12R, 30L, and 35

NC-1, 20 MAR 2025 to 17 APR 2025

NC-1, 20 MAR 2025 to 17 APR 2025

ILS RWY 12R (SA CAT I)