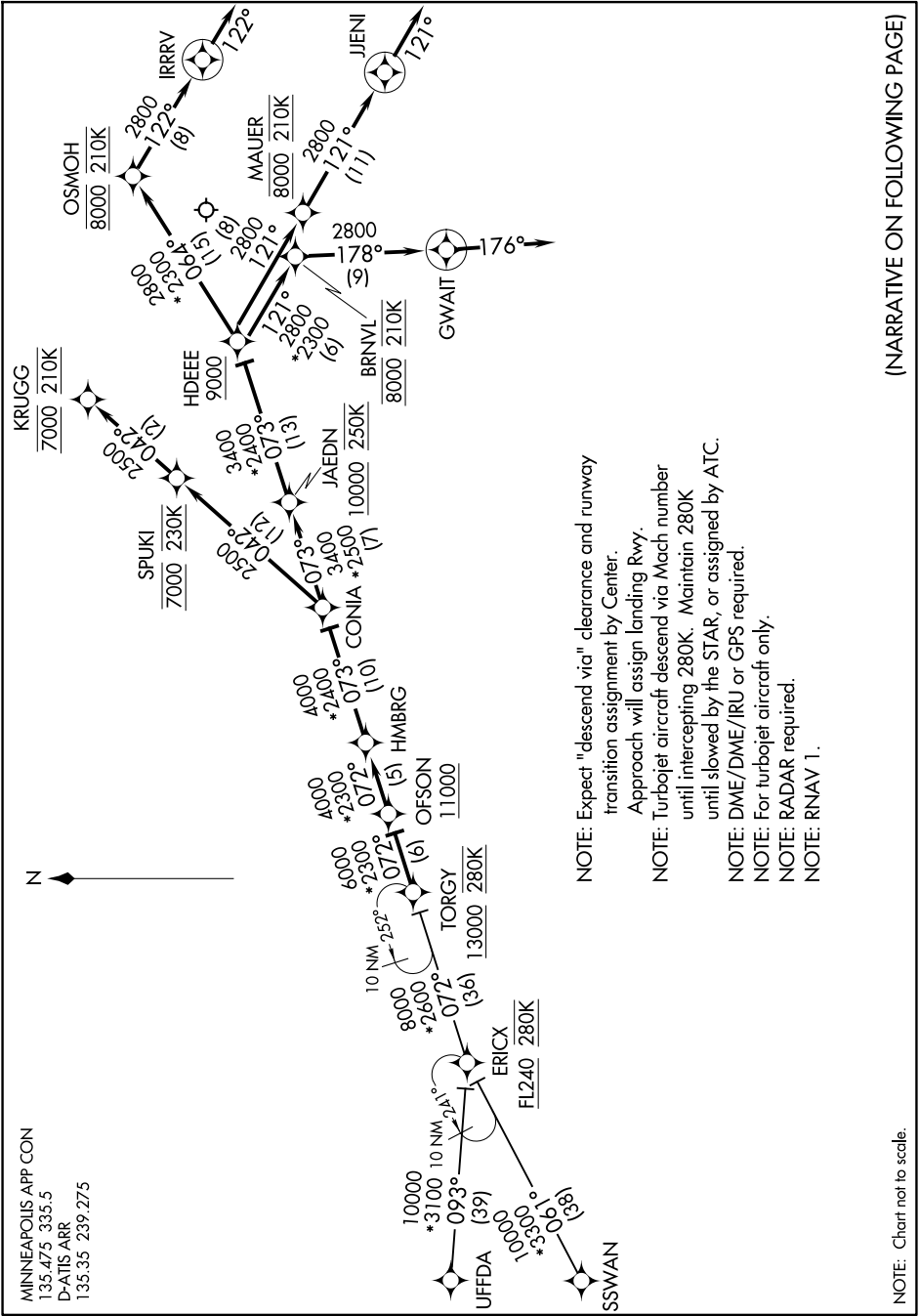


TORGY THREE ARRIVAL (RNAV)

NC-1, 20 MAR 2025 to 17 APR 2025



(NARRATIVE ON FOLLOWING PAGE)

- NOTE: Expect "descend via" clearance and runway transition assignment by Center.
- Approach will assign landing Rwy.
- NOTE: Turbojet aircraft descend via Mach number until intercepting 280K. Maintain 280K until slowed by the STAR, or assigned by ATC.
- NOTE: DME/DME/IRU or GPS required.
- NOTE: For turbojet aircraft only.
- NOTE: RADAR required.
- NOTE: RNAV 1.

NOTE: Chart not to scale.

NC-1, 20 MAR 2025 to 17 APR 2025

TORGY THREE ARRIVAL (RNAV)