

REBAS ONE ARRIVAL (RNAV) Transition Routes

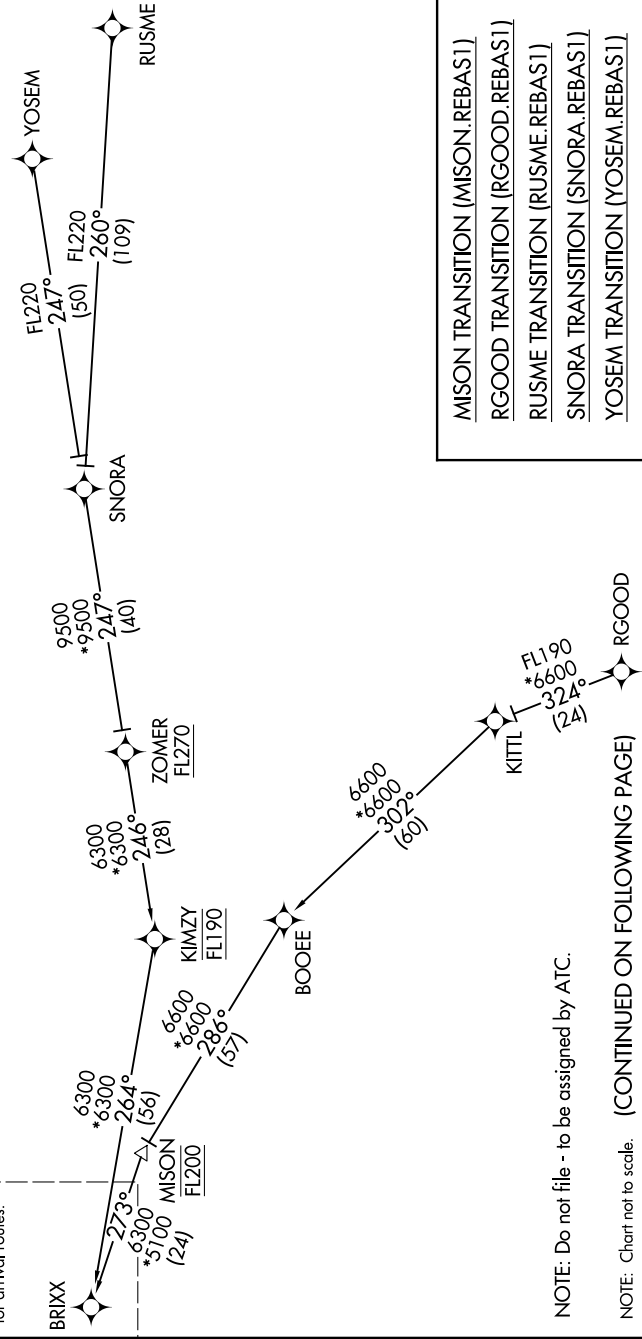
NAPA, CALIFORNIA

SW-2, 20 MAR 2025 to 17 APR 2025

RNAV 1 - DME/DME/IRU or GPS.
RADAR required.

See following page for arrival routes.

- OAKLAND CENTER
127.8 353.5
- APC ATIS
124.05
- STS ATIS
120.55
- APC GND CON
121.7
- STS GND CON
121.9
- NAPA TOWER ★
118.7 257.8
- SANTA ROSA TOWER ★
118.5 363.0



- MISON TRANSITION (MISON.REBAS1)
- RGOOD TRANSITION (RGOOD.REBAS1)
- RUSME TRANSITION (RUSME.REBAS1)
- SNORA TRANSITION (SNORA.REBAS1)
- YOSEM TRANSITION (YOSEM.REBAS1)

NOTE: Do not file - to be assigned by ATC.

NOTE: Chart not to scale. (CONTINUED ON FOLLOWING PAGE)

REBAS ONE ARRIVAL (RNAV) Transition Routes

NAPA, CALIFORNIA

SW-2, 20 MAR 2025 to 17 APR 2025