

LOC/DME I-LSQ	APP CRS	Rwy Idg	22L	22R
<b>108.7</b>	<b>219°</b>	TDZE	<b>8207</b>	<b>9560</b>
Chan <b>24</b>		Apt Elev	<b>11</b>	<b>10</b>
			<b>17</b>	<b>17</b>

# ILS or LOC RWY 22L

NEWARK LIBERTY INTL (EWR)

RNP APCH - GPS.

Aircraft not GPS equipped - RADAR required for procedure entry. DME required.

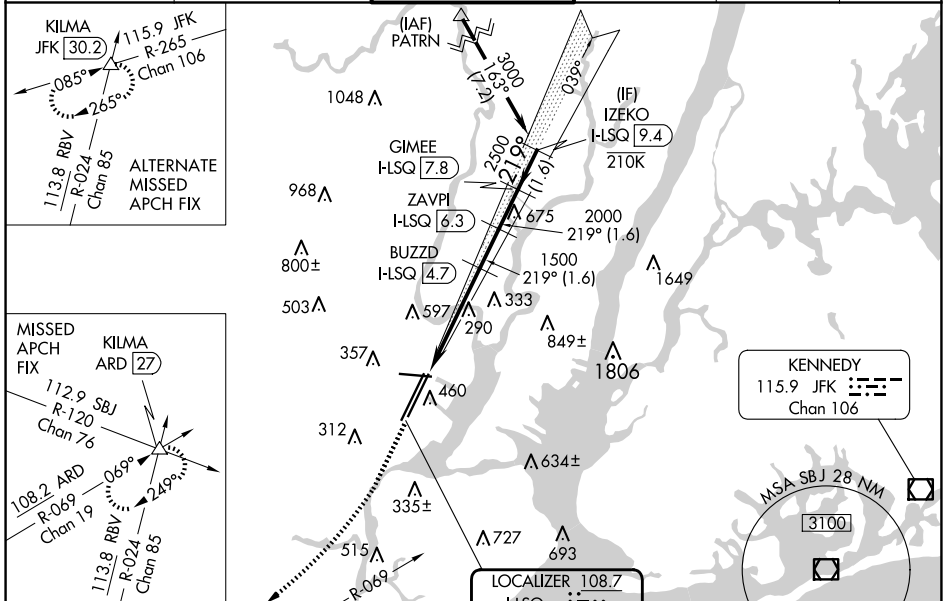
22L ALSF-2

22R MALSR

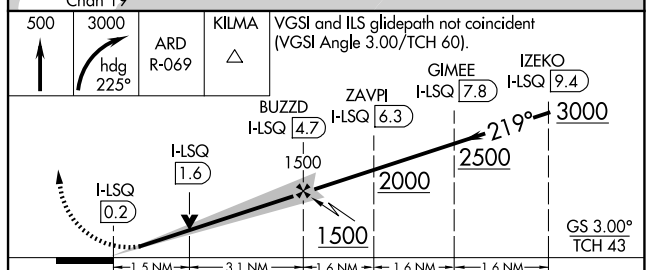
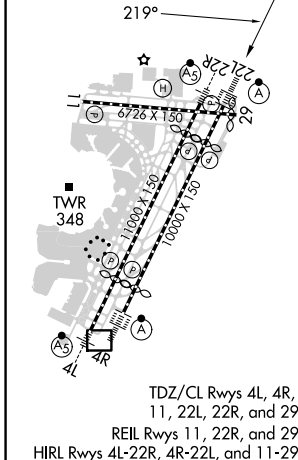
MISSED APPROACH: Climb to 500 then climbing right turn to 3000 on heading 225° and ARD VOR/DME R-069 to KILMA INT/ARD 27 DME and hold.

⚠ Circling NA south of Rwy 11-29. When Circling to Rwy 29 at night, operational VGSIL required, remain on or above VGSIL glidepath until threshold.

D-ATIS	NEWARK APP CON	NEWARK TOWER	GND CON	CLNC DEL	CPDLC
<b>115.7 134.825</b>	<b>128.55 379.9</b>	<b>118.3 257.6</b>	<b>121.8</b>	<b>118.85</b>	



ELEV 17	TDZE 22L 11	TDZE 22R 10
---------	-------------	-------------



CATEGORY	A	B	C	D
S-ILS 22L	211/18 200 (200-½)			
S-LOC 22L	540/24	529 (600-½)	540/55	529 (600-1)
SIDESTEP RWY 22R	540/55 530 (600-1)			540-1½ 530 (600-1½)
CIRCLING	660-1	643 (700-1)	900-2¾ 883 (900-2¾)	900-3 883 (900-3)

NE-2, 20 MAR 2025 to 17 APR 2025