

# RNAV (GPS) RWY 4L

NEWARK LIBERTY INTL (EWR)

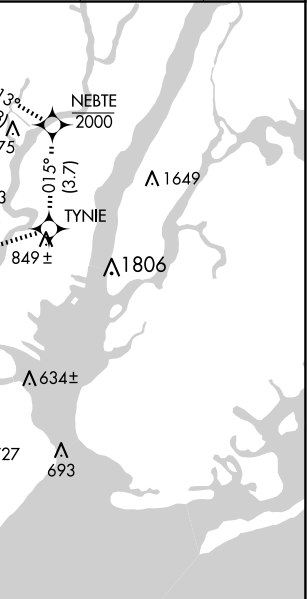
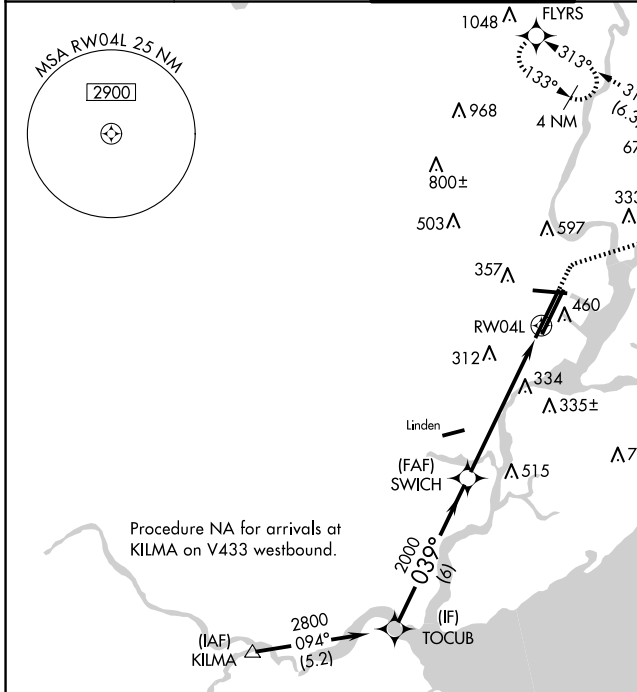
WAAS CH <b>56224</b> <b>W04A</b>	APP CRS <b>039°</b>	Rwy Idg <b>8460</b> TDZE <b>10</b> Apt Elev <b>17</b>
--	------------------------	---

RNP APCH - GPS.

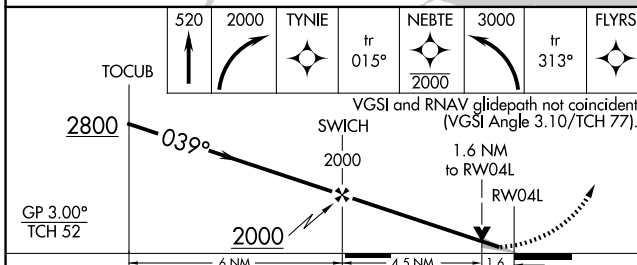
**⚠** When Circling for Rwy 29 at night, operational VGSI required, remain on or above VGSI glidepath until threshold. For uncompensated Baro-VNAV systems, LNAV/VNAV NA below -12°C or above 54°C.

**MALSR**  
⚠ MISSED APPROACH: (Do not exceed 210K until NEBTE) Climb to 520, then climbing right turn to 2000 direct TYNIE, and on track 015° to NEBTE, cross NEBTE at or below 2000, then climbing left turn to 3000 on track 313° to FLYRS and hold, continue climb-in-hold to 3000.

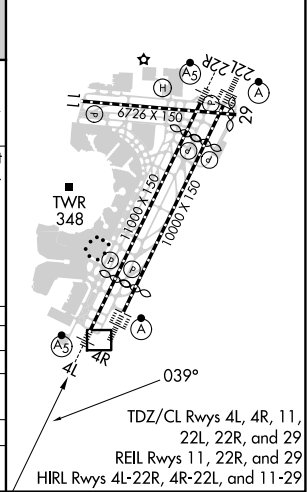
D-ATIS <b>115.7 134.825</b>	NEWARK APP CON <b>128.55 379.9</b>	NEWARK TOWER <b>118.3 257.6</b>	GND CON <b>121.8</b>	CLNC DEL <b>118.85</b>	CPDLC
--------------------------------	---------------------------------------	------------------------------------	-------------------------	---------------------------	-------



ELEV 17	<b>D</b> TDZE 10
---------	------------------



CATEGORY	A	B	C	D
LPV DA		210/18	200 (200-½)	
LNAV/ VNAV		550/55	540 (600-1)	
LNAV MDA	600/24	590 (600-½)	600-1¼	590 (600-1¼)
<b>C</b> CIRCLING	760-1	743 (800-1)	900-2¾ 883 (900-2¾)	900-3 883 (900-3)



NE-2, 20 MAR 2025 to 17 APR 2025

NE-2, 20 MAR 2025 to 17 APR 2025