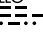



# TERKS TWO ARRIVAL

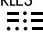
NORFOLK APP CON  
 118.9 353.7  
 KNGU ATIS  
 118.425 342.0  
 KNTU ATIS \*  
 317.6  
 ORF ATIS  
 127.15

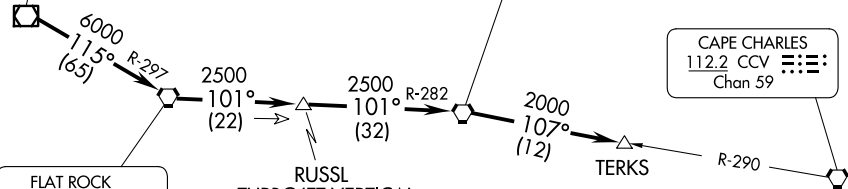
### TURBOJET VERTICAL NAVIGATION PLANNING INFORMATION

Expect clearance to cross  
 at 14,000'.

MONTEBELLO  
 115.3 MOL   
 Chan 100

HARCUM  
 108.8 HCM   
 Chan 25

CAPE CHARLES  
 112.2 CCV   
 Chan 59

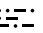


### TURBOJET VERTICAL NAVIGATION PLANNING INFORMATION

Expect clearance to cross  
 at 16,000'.

### TURBOJET VERTICAL NAVIGATION PLANNING INFORMATION

Expect clearance to cross  
 20 NM west at FL 210.

FLAT ROCK  
 113.3 FAK   
 Chan 80

NORFOLK NS  
 (CHAMBERS FLD)

NORFOLK  
 INTL

HAMPTON  
 ROADS  
 EXEC

OCEANA NAS/  
 APOLLO SOUCEK  
 FLD

NOTE: For aircraft at or  
 above 14,000' only.

SUFFOLK  
 EXEC

CHESAPEAKE  
 RGNL

NOTE: Chart not to scale.

### ARRIVAL ROUTE DESCRIPTION

From over MOL VOR/DME via R-115 and FAK R-297 to FAK VORTAC, then via FAK R-101 and HCM R-282 to HCM VORTAC, then via HCM R-107 and CCV R-290 to TERKS INT. Expect radar vectors to the final approach course after the TERKS INT.

# TERKS TWO ARRIVAL

NE-3, 20 MAR 2025 to 17 APR 2025

NE-3, 20 MAR 2025 to 17 APR 2025