

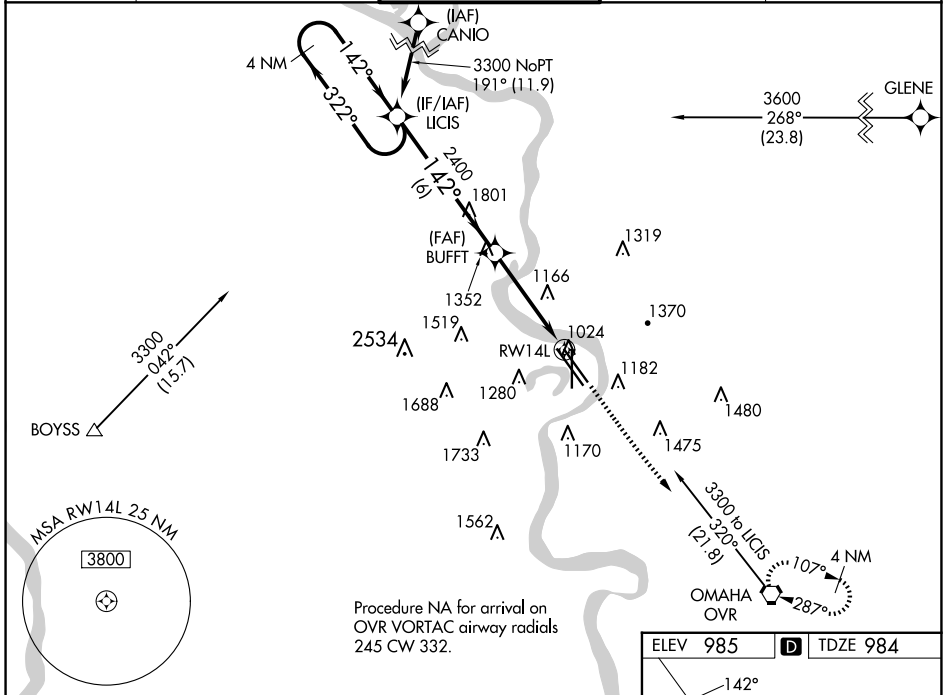
WAAS CH 56699 W 14B	APP CRS 142°	Rwy Idg 8500 TDZE 984 Apt Elev 985
---	------------------------	---

RNAV (GPS) Y RWY 14L

EPPLEY AIRFIELD (OMA)

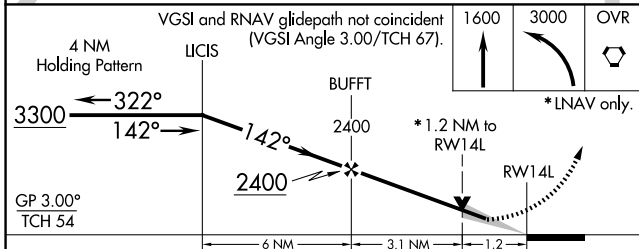
RNP APCH.		MALSR	MISSED APPROACH: Climb to 1600 then climbing left turn to 3000 direct OVR VORTAC and hold.	
<p>▼ For uncompensated Baro-VNAV systems, LNAV/VNAV NA below -19°C (-2°F) or above 54°C (130°F). For inop ALS, increase LNAV/VNAV all Cats visibility to RVR 5500. #RVR 1800 authorized with use of FD or AP or HUD to DA.</p>				

D-ATIS 120.4	OMAHA APP CON 135.875 354.05	OMAHA TOWER 132.1 256.9	GND CON 121.9	CLNC DEL 119.9
------------------------	--	-----------------------------------	-------------------------	--------------------------

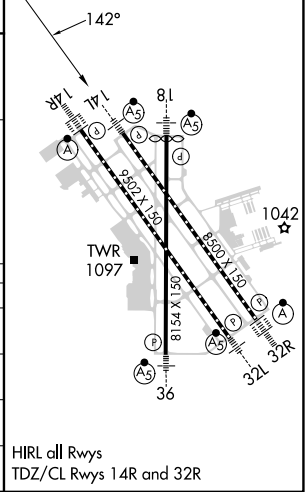


NC-2, 20 MAR 2025 to 17 APR 2025

NC-2, 20 MAR 2025 to 17 APR 2025



ELEV 985	D	TDZE 984
----------	----------	----------



CATEGORY	A	B	C	D
LPV DA#	1184/24 200 (200-½)			
LNAV/VNAV DA	1363/35 379 (400-¾)			
LNAV MDA	1420/24	436 (500-½)	1420/40	436 (500-¾)
CIRCLING	1660-1	1680-1	2000-3	2040-3
	675 (700-1)	695 (700-1)	1015 (1100-3)	1055 (1100-3)

HIRL all Rwys
TDZ/CL Rwys 14R and 32R