

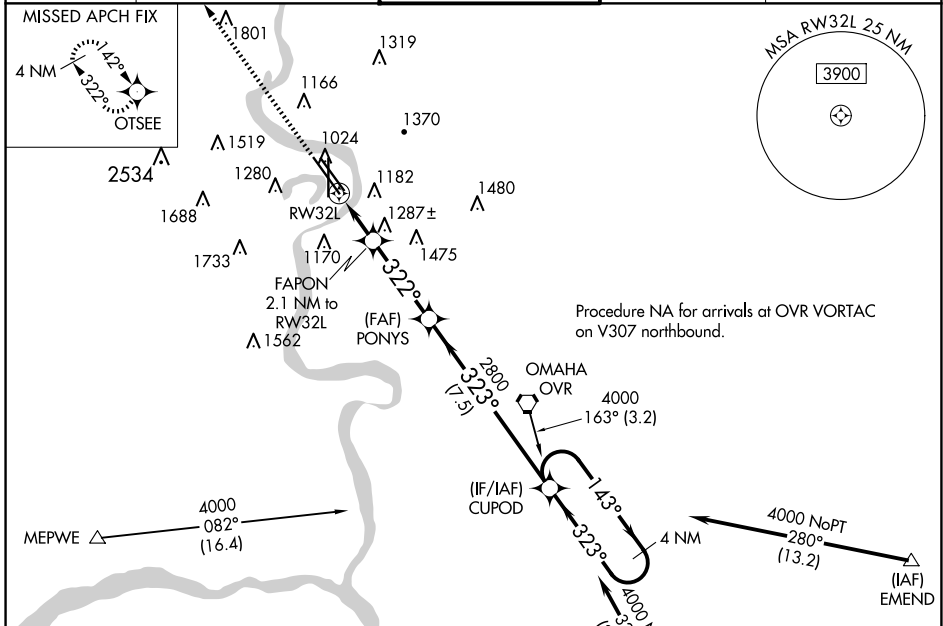
WAAS CH 60917 W32A	APP CRS 322°	Rwy Idg 9502 TDZE 981 Apt Elev 985
----------------------------------------	------------------------	---------------------------------------------------------------

RNAV (GPS) Y RWY 32L

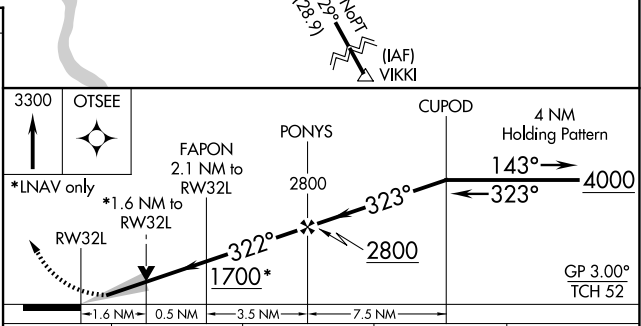
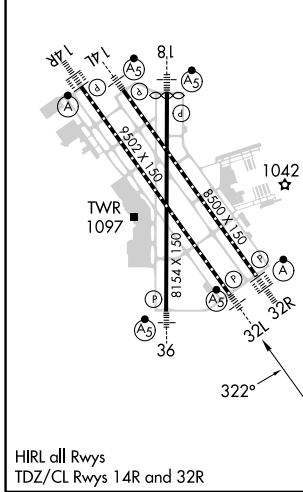
EPPLEY AIRFIELD (OMA)

RNP APCH.	MALSR 	MISSED APPROACH: Climb to 3300 direct OTSEE and hold, continue climb-in-hold to 3300.
<p> For uncompensated Baro-VNAV systems, LNAV/VNAV NA below -19°C (-2°F) or above 54°C (130°F). # RVR 1800 authorized with use of FD or AP or HUD to DA.</p>		

D-ATIS 120.4	OMAHA APP CON 135.875 354.05	OMAHA TOWER 132.1 256.9	GND CON 121.9	CLNC DEL 119.9
------------------------	----------------------------------------	-----------------------------------	-------------------------	--------------------------



ELEV 985	D	TDZE 981
----------	----------	----------



CATEGORY	A	B	C	D
LPV DA#		1181/24	200 (200-½)	
LNAV/VNAV DA		1572-1¼	591 (600-1¼)	
LNAV MDA	1540/24	559 (600-½)	1540/60	559 (600-1¼)
C CIRCLING	1660-1 675 (700-1)	1680-1 695 (700-1)	2000-3 1015 (1100-3)	2040-3 1055 (1100-3)

NC-2, 20 MAR 2025 to 17 APR 2025

NC-2, 20 MAR 2025 to 17 APR 2025