

LOC/DME I-UNQ 111.5 Chan 52	APP CRS 337°	Rwy Idg 6081 TDZE 50 Apt Elev 54
---	------------------------	---

ILS or LOC RWY 34

RHODE ISLAND TF GREEN INTL (PVD)

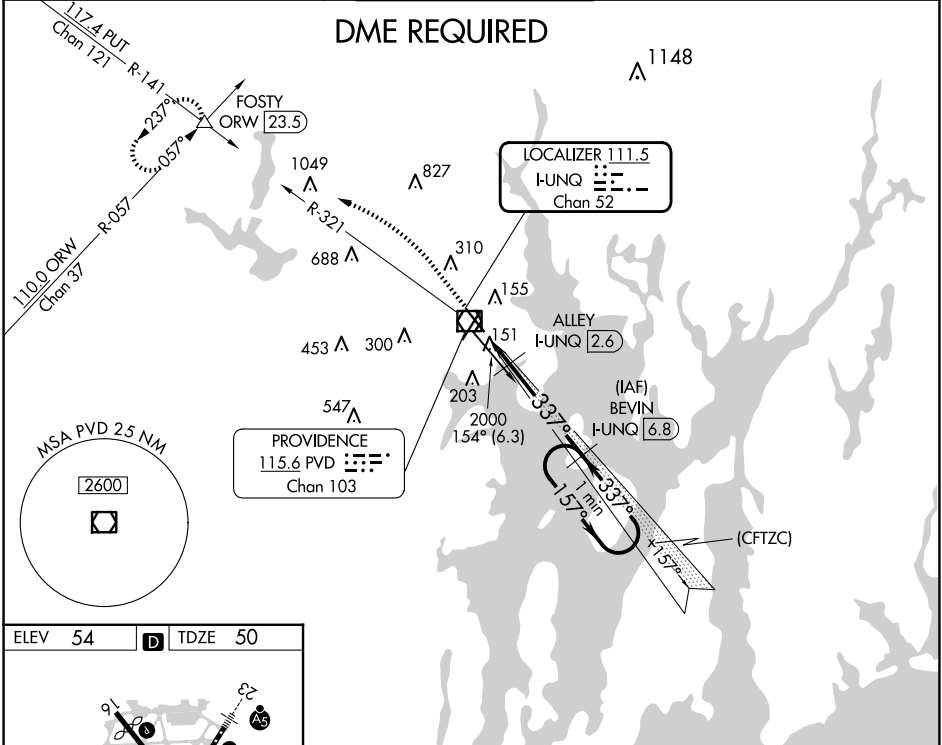
⚠ DME required. Rwy 34 helicopter visibility reduction below RVR 4000 NA. For inop MALSRS, increase S-LOC Cat A/B visibility to RVR 5500, and Cat C/D visibility to RVR 5000. Autopilot coupled approach NA below 300.

MALSRS
AS

MISSED APPROACH: Climb to 700 then climbing left turn to 2500 on heading 300° and on PVD VOR/DME R-321 to FOSTY INT/ORW 23.5 DME and hold.

D-ATIS 124.2	PROVIDENCE APP CON * 123.675 244.875	PROVIDENCE TOWER * 120.7 (CTAF) 257.8	GND CON 121.9 348.6	CLNC DEL 126.65 348.6
------------------------	--	---	-------------------------------	---------------------------------

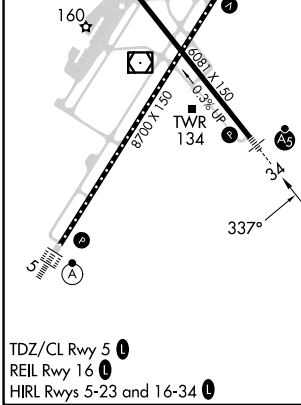
DME REQUIRED



NE-1, 20 MAR 2025 to 17 APR 2025

NE-1, 20 MAR 2025 to 17 APR 2025

ELEV 54	D	TDZE 50
----------------	----------	----------------



TDZ/CL Rwy 5 **Ⓛ**
REIL Rwy 16 **Ⓛ**
HIRL Rwy 5-23 and 16-34 **Ⓛ**

