

WAAS CH 58023 W34A	APP CRS 337°	Rwy Idg TDZE Apt Elev	6081 50 54
--	------------------------	-----------------------------	---------------------------------------

RNAV (GPS) RWY 34

RHODE ISLAND TF GREEN INTL (PVD)

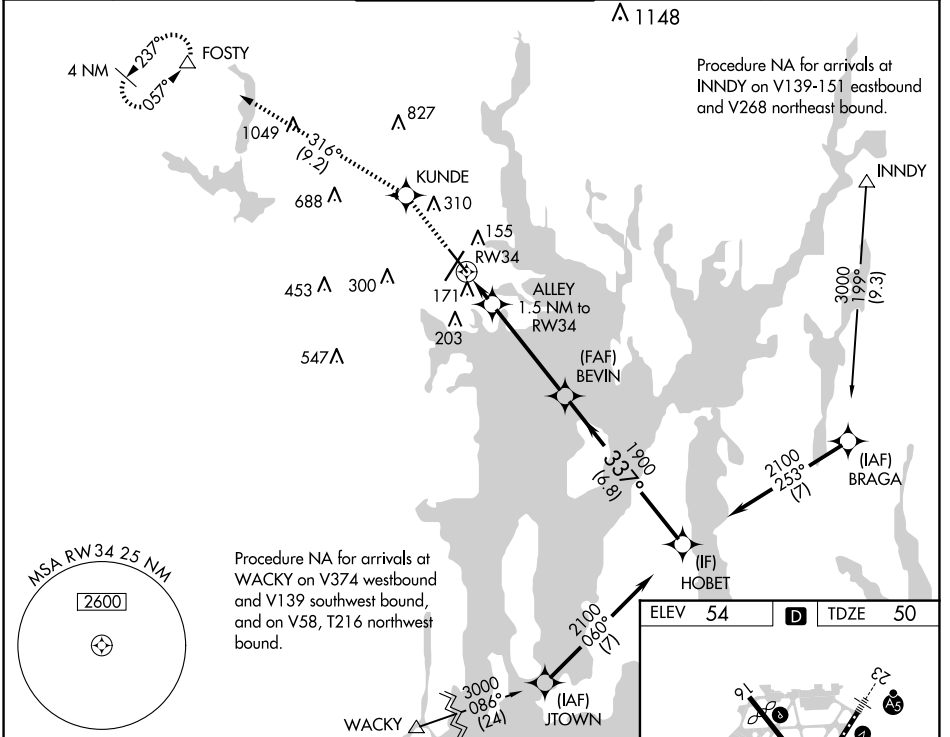
RNP APCH

For uncompensated Baro-VNAV systems, LNAV/VNAV NA below -16°C or above 54°C. For inop MALS, increase LNAV/VNAV all Cats visibility to RVR 5000. For inop MALS, increase LNAV Cat A/B visibility to RVR 5500, and Cat C/D visibility to RVR 6000. Rwy 34 helicopter visibility reduction below RVR 4000 NA.

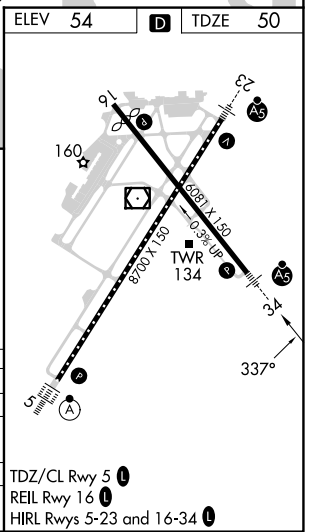
MALS

MISSED APPROACH: Climb to 2500 direct KUNDE and on track 316° to FOSTY and hold.

D-ATIS 124.2	PROVIDENCE APP CON * 123.675 244.875	PROVIDENCE TOWER * 120.7 (CTAF) 0 257.8	GND CON 121.9 348.6	CLNC DEL 126.65 348.6
------------------------	--	---	-------------------------------	---------------------------------



2500	KUNDE	FOSTY	VGSi and RNAV glidepath not coincident (VGSi Angle 3.00/TCH 60.)	
↑	◆	△	BEVIN	HOBET
	tr 316°		1900	2100
*LNAV only.	ALLEY 1.5 NM to RW34		337°	GP 3.00°
	RW34		1900	TCH 53
	1.5 NM	4.2 NM	6.8 NM	



CATEGORY	A	B	C	D
LPV DA		330/40	280 (300-¾)	
LNAV/VNAV DA		349/40	299 (300-¾)	
LNAV MDA		440/40	390 (400-¾)	
CIRCLING	560-1 506 (600-1)	640-1 586 (600-1)	640-1½ 586 (600-1½)	860-2½ 806 (900-2½)

NE-1, 20 MAR 2025 to 17 APR 2025

NE-1, 20 MAR 2025 to 17 APR 2025