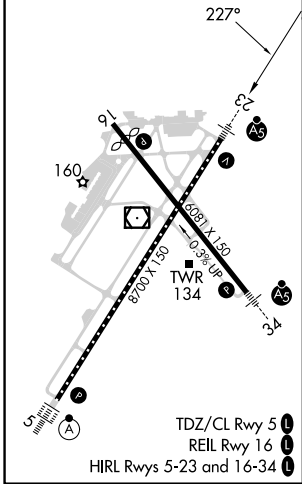
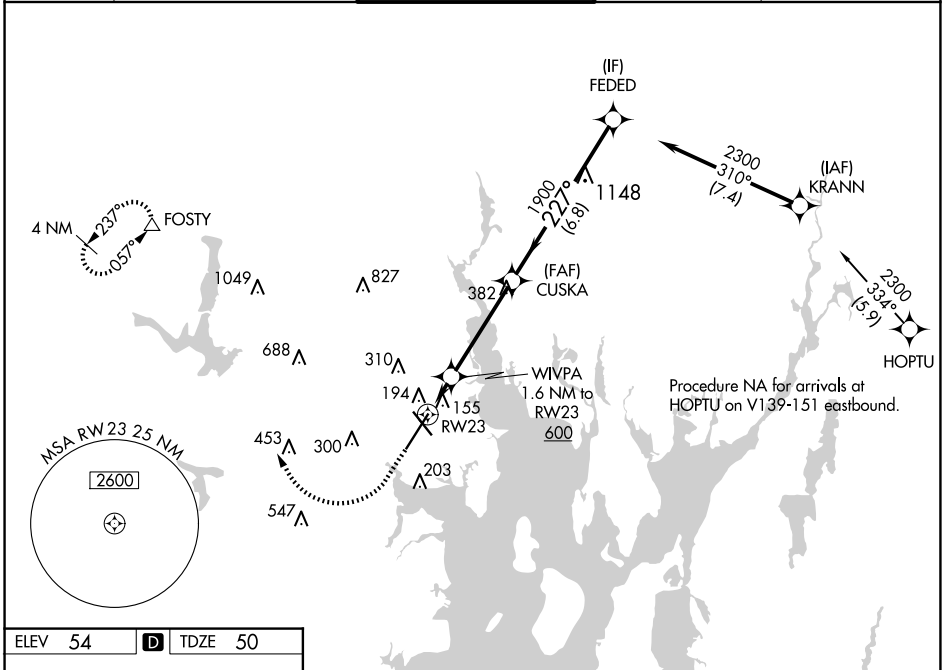


WAAS CH 93823 W23A	APP CRS 227°	Rwy Idg TDZE Apt Elev	8700 50 54
--	------------------------	-----------------------------	---------------------------------------

RNAV (GPS) Y RWY 23

RHODE ISLAND TF GREEN INTL (PVD)

RNP APCH - GPS.		MALSR	MISSED APPROACH: Climb to 1700 then climbing right turn to 2500 direct FOSTY and hold.	
<p>▼ For uncompensated Baro-VNAV systems, LNAV/VNAV NA below -16°C or above 54°C. Inop ALS, increase LNAV Cats C/D visibility to RVR 6000. *RVR 1800 authorized with use of FD or AP or HUD to DA.</p>				
D-ATIS 124.2	PROVIDENCE APP CON * 123.675 244.875	PROVIDENCE TOWER * 120.7 (CTAF) 0 257.8	GND CON 121.9 348.6	CLNC DEL 126.65 348.6



ELEV 54	D	TDZE 50	<p>1700 2500 FOSTY</p> <p>↑ ↷ △</p> <p>VGSI and RNAV glidepath not coincident (VGSI Angle 3.00/TCH 41).</p>							
			<p>GP 3.00° TCH 51</p>							
			<p>1.6 NM 4.1 NM 6.8 NM</p>							
CATEGORY			A		B		C		D	
LPV DA *			250/24		200 (200-½)					
LNAV/VNAV DA			355/24		305 (400-½)					
LNAV MDA			460/24		410 (500-½)		460/40		410 (500-¾)	
C CIRCLING			560-1		640-1		640-1½		860-2½	
			506 (600-1)		586 (600-1)		586 (600-1½)		806 (900-2½)	

NE-1, 20 MAR 2025 to 17 APR 2025

NE-1, 20 MAR 2025 to 17 APR 2025