

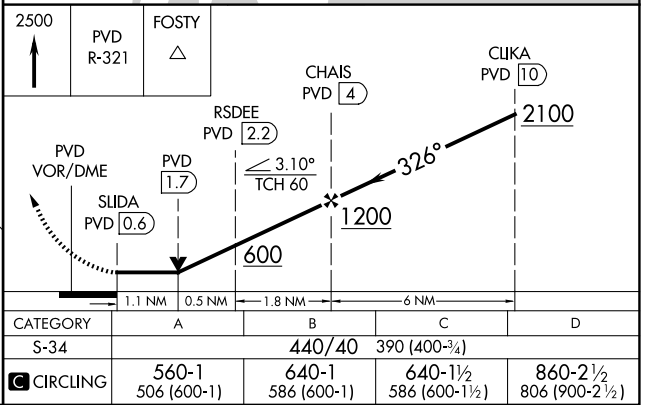
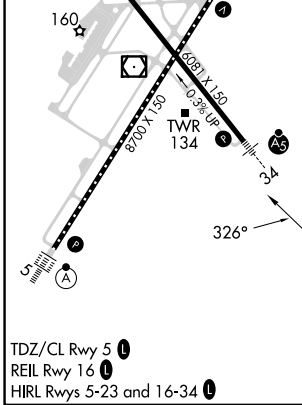
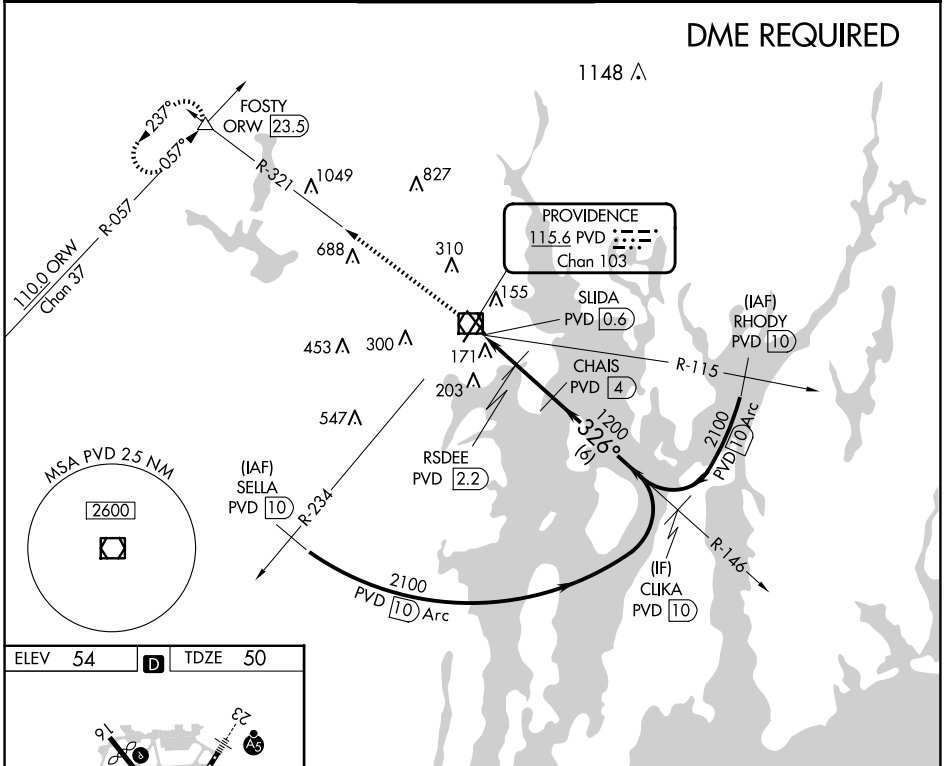
VOR/DME PVD 115.6 Chan 103	APP CRS 326°	Rwy Idg TDZE Apt Elev	6081 50 54
--	------------------------	-----------------------------	---------------------------------------

VOR Z RWY 34

RHODE ISLAND TF GREEN INTL (PVD)

	Rwy 34 helicopter visibility reduction below RVR 4000 NA. DME required. For inop ALS, increase Cat A/B visibility to RVR 5500, and Cat C/D to RVR 6000.	MALSR 	MISSED APPROACH: Climb to 2500 on PVD VOR/DME R-321 to FOSTY INT/ORW 23.5 DME and hold.
--	--	-----------	---

D-ATIS 124.2	PROVIDENCE APP CON * 123.675 244.875	PROVIDENCE TOWER * 120.7 (CTAF) 0 257.8	GND CON 121.9 348.6	CLNC DEL 126.65 348.6
------------------------	--	---	-------------------------------	---------------------------------



NE-1, 20 MAR 2025 to 17 APR 2025

NE-1, 20 MAR 2025 to 17 APR 2025