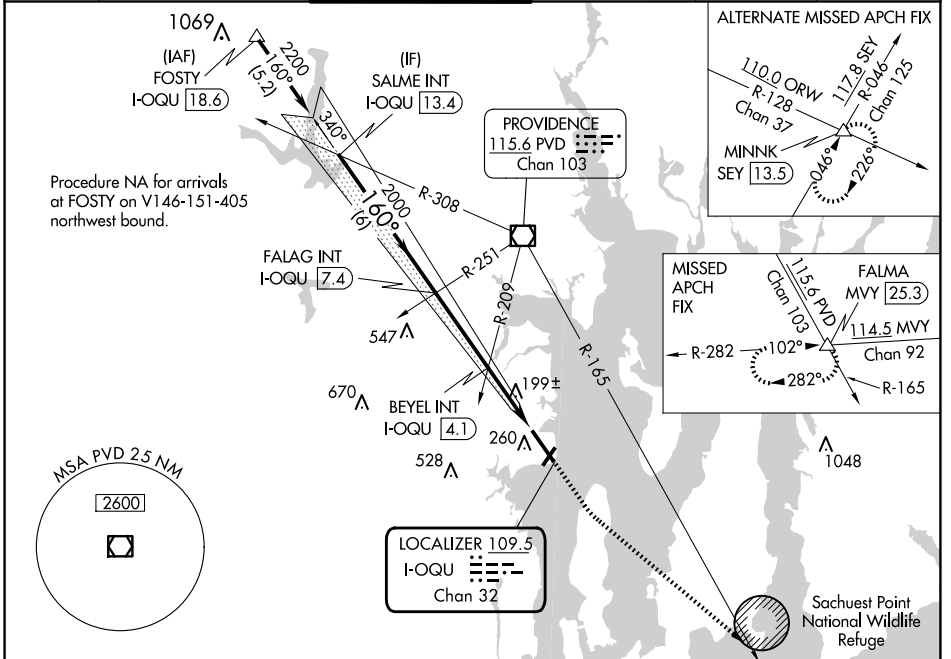


LOC/DME I-OQU	APP CRS	Rwy ldg	<b>7100</b>
<b>109.5</b>	<b>160°</b>	TDZE	<b>18</b>
Chan <b>32</b>		Apt Elev	<b>18</b>

# ILS or LOC RWY 16

QUONSET STATE (OQU)

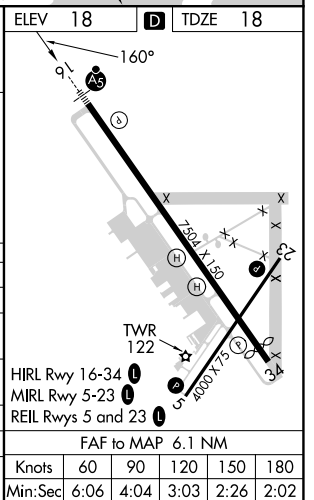
<p>Circling Rwy 5 NA at night. For inop ALS, increase S-LOC 16 Cat C/D visibility to 2½ SM.</p>	<p>MALS/R</p>	<p>MISSED APPROACH: Climb to 500 then climbing left turn to 3000 on heading 145° and PVD VOR/DME R-165 to FALMA and hold.</p>			
		<p>ATIS <b>118.6</b></p>	<p>PROVIDENCE APP CON ★ <b>123.675 244.875</b></p>	<p>QUONSET TOWER ★ <b>126.35 (CTAF) 0 252.9</b></p>	<p>GND CON <b>134.5 226.675</b></p>



VGSI and ILS glidepath not coincident (VGSI Angle 3.00/TCH 58).

500	3000	PVD R-165	FALMA
↑	hdg 145°		△

S-ILS 16	218-½ 200 (200-½)			
S-LOC 16	840-½ 822 (900-½)	840-¾ 822 (900-¾)	840-1⅞	822 (900-1⅞)
<b>C</b> CIRCLING	840-1¼	822 (900-1¼)	840-2½ 822 (900-2½)	880-2¾ 862 (900-2¾)
BEYEL FIX MINIMUMS				
S-LOC 16	460-½	442 (500-½)	460-⅞	442 (500-⅞)
<b>C</b> CIRCLING	620-1	602 (700-1)	620-1¾ 602 (700-1¾)	880-2¾ 862 (900-2¾)



NE-1, 20 MAR 2025 to 17 APR 2025

NE-1, 20 MAR 2025 to 17 APR 2025