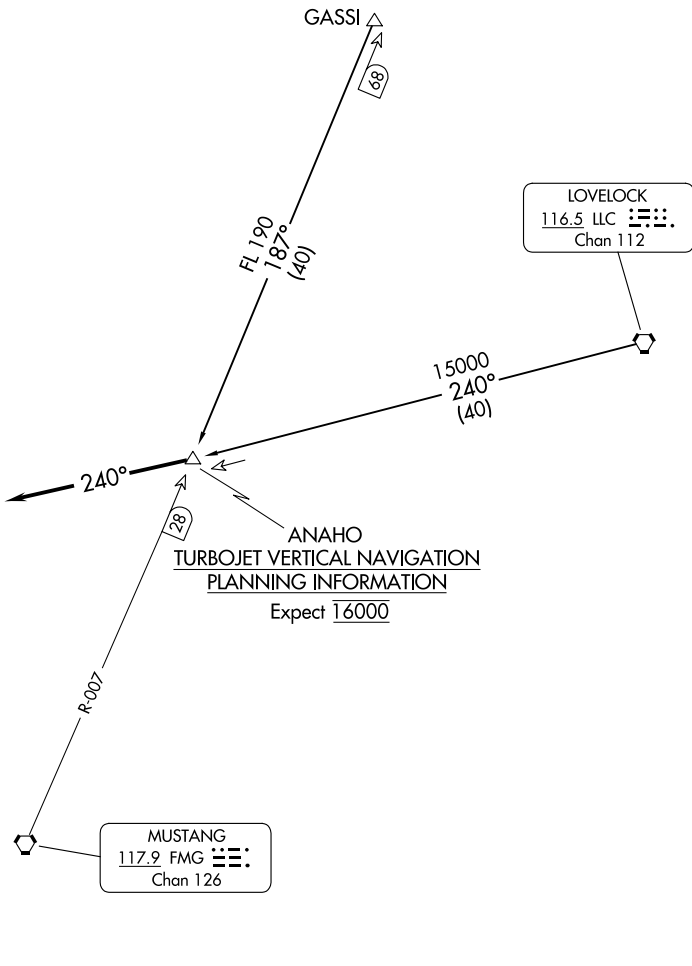


NORCAL APP CON
 126.3 353.9
 D-ATIS
 135.8 363.0



SW-4, 20 MAR 2025 to 17 APR 2025

SW-4, 20 MAR 2025 to 17 APR 2025

CAUTION: Intense glider activity up to FL180.

NOTE: RADAR required.

NOTE: Chart not to scale.

ARRIVAL ROUTE DESCRIPTION

GASSI TRANSITION (GASSI.ANAHO2): From over GASSI via FMG R-007 to ANAHO INT/DME. Thence. . . .

LOVELOCK TRANSITION (LLC.ANAHO2): From over LLC VORTAC via LLC R-240 to ANAHO INT/DME. Thence. . . .

. . . .Depart ANAHO INT/DME heading 240° for vectors to final approach course.