

| | | | | |
|----------------|-------------|--------------|-------------|-------------|
| LOC/DME I-RNO | APP CRS | Rwy Idg | 17R | 17L |
| 110.9 | 167° | 10001 | 9000 | |
| Chan 46 | | TDZE | 4415 | 4415 |
| | | Apt Elev | 4415 | 4415 |

LOC Y RWY 17R

RENO/TAHOE INTL (RNO)

DME required.

⚠ Circling Rwy 8 NA at night. For inop ALS, increase S-LOC 17R* Cat E visibility to 3 SM. Circling NA for Cat E southwest **3.13°C** of Rwys 8 and 35L.

Inop table does not apply to Cats C, D and E.

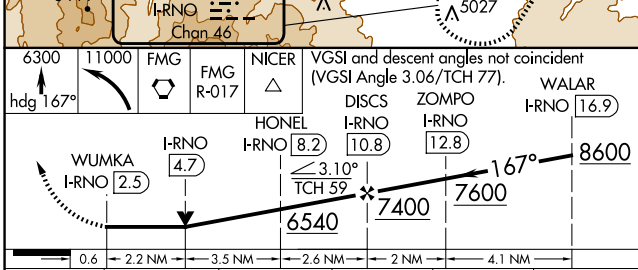
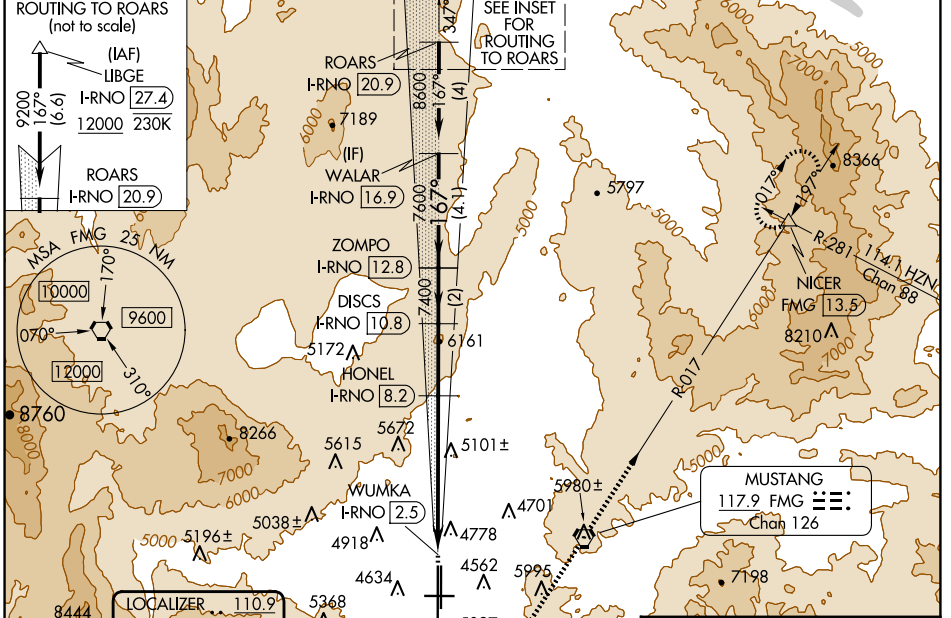
MALSR 17R

MISSED APPROACH: Climb to 6300 on heading 167° then climbing left turn 11000 direct FMG VORTAC and on FMG VORTAC R-017 to NICER INT and hold, continue climb-in-hold to 11000.

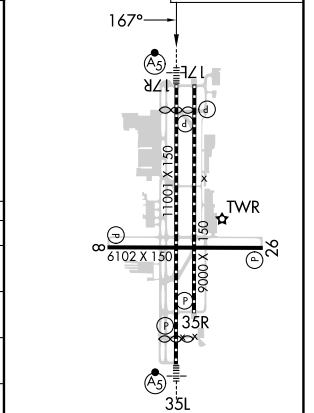
* Missed approach requires minimum climb of 320 feet per NM to 8000.

† Missed approach requires minimum climb of 260 feet per NM to 8000.

| | | | | | |
|--------------------|---------------------|--------------------|--------------------|---------------------|-------|
| D-ATIS | NORCAL APP CON | RENO TOWER | GND CON | CLNC DEL | CPDLC |
| 135.8 363.0 | 119.2 279.55 | 118.7 257.8 | 121.9 348.6 | 124.9 370.85 | |



| | |
|-----------|------------------------|
| ELEV 4415 | D TDZE 17R 4415 |
| | TDZE 17L 4415 |



| CATEGORY | A | B | C | D | E |
|-------------------|---------------------------------|---------------------------------|------------|-------------------|-------------------------|
| S-LOC 17R* | 5420/40 1005 (1100-3/4) | 5420/55 1005 (1100-1) | 5420-2 1/2 | 1005 (1100-2 1/2) | |
| SIDESTEP 17L*# | 5420-1 1/4 1005 (1100-1 1/4) | 5420-1 1/2 1005 (1100-1 1/2) | 5420-3 | 1005 (1100-3) | |
| S-LOC 17RT# | 5720/40 1305 (1400-3/4) | 5720/55 1305 (1400-1) | 5720-3 | 1305 (1400-3) | |
| S-LOC 17R# | 5920/40 1505 (1600-3/4) | 5920/55 1505 (1600-1) | 5920-3 | 1505 (1600-3) | 6180-3 1765 (1800-3) |
| C CIRCLING | 5920-1 1/4 1505 (1600-1 1/4) | 5920-1 1/2 1505 (1600-1 1/2) | 6480-3 | 2065 (2100-3) | 6700-3 2285 (2300-3) |

MIRL Rwy 8-26
REIL Rwys 8, 17L, 26 and 35R
HIRL Rwys 17R-35L and 17L-35R

SW-4, 20 MAR 2025 to 17 APR 2025

SW-4, 20 MAR 2025 to 17 APR 2025