

RENO ONE DEPARTURE

AL-346 (FAA)

RENO/TAHOE INTL (RNO)

RENO, NEVADA

TAKEOFF MINIMUMS

RADAR required.

**TOP ALTITUDE:
FL190**

D-ATIS	135.8	363.0
CLNC DEL	124.9	370.85
CPDLC		
GND CON	121.9	348.6
RENO TOWER	118.7	257.8

Rwy 8: NA- Obstacles.

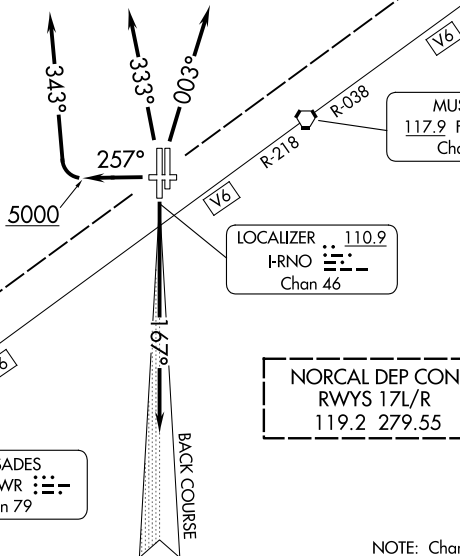
Rwy 17L: Standard with minimum climb of 730' per NM to 10900, or 600-1¼ with minimum climb of 352' per NM to 10900.

Rwy 17R: Standard with minimum climb of 460' per NM to 10900, or 300-1 with minimum climb of 395' per NM to 10900.

Rwy 26: Standard with minimum climb of 500' per NM to 9700.

Rwys 35L/R: Standard with minimum climb of 480' per NM to 8700, or 500-1½ with minimum climb of 430' per NM to 8700.

NORCAL DEP CON
RWYS 26 AND 35L/R
126.3 353.9



NORCAL DEP CON
RWYS 17L/R
119.2 279.55

NOTE: Chart not to scale.

DEPARTURE ROUTE DESCRIPTION

TAKEOFF RUNWAYS 17L/R: Climb on heading 167° and I-RNO localizer south course.

Thence. . .

TAKEOFF RUNWAY 26: Climb on heading 257° to 5000 then climbing right turn heading 343°. Thence. . .

TAKEOFF RUNWAYS 35L/R: Climb on heading 333° CW 003° as assigned by ATC.

Thence. . .

. . . All aircraft maintain FL190 or assigned altitude. Expect filed altitude within 5 minutes after departure. Expect RADAR vectors to assigned route/fix.

LOST COMMUNICATIONS: If not in contact with departure control within one minute after takeoff, maintain assigned heading until passing 10000, thence. . .

RUNWAYS 17L/R DEPARTURES: Turn left direct FMG VORTAC, then on assigned route.

RUNWAYS 26 and 35L/R DEPARTURES: Turn right direct FMG VORTAC, then on assigned route.

RENO ONE DEPARTURE

SW-4, 20 MAR 2025 to 17 APR 2025

SW-4, 20 MAR 2025 to 17 APR 2025