

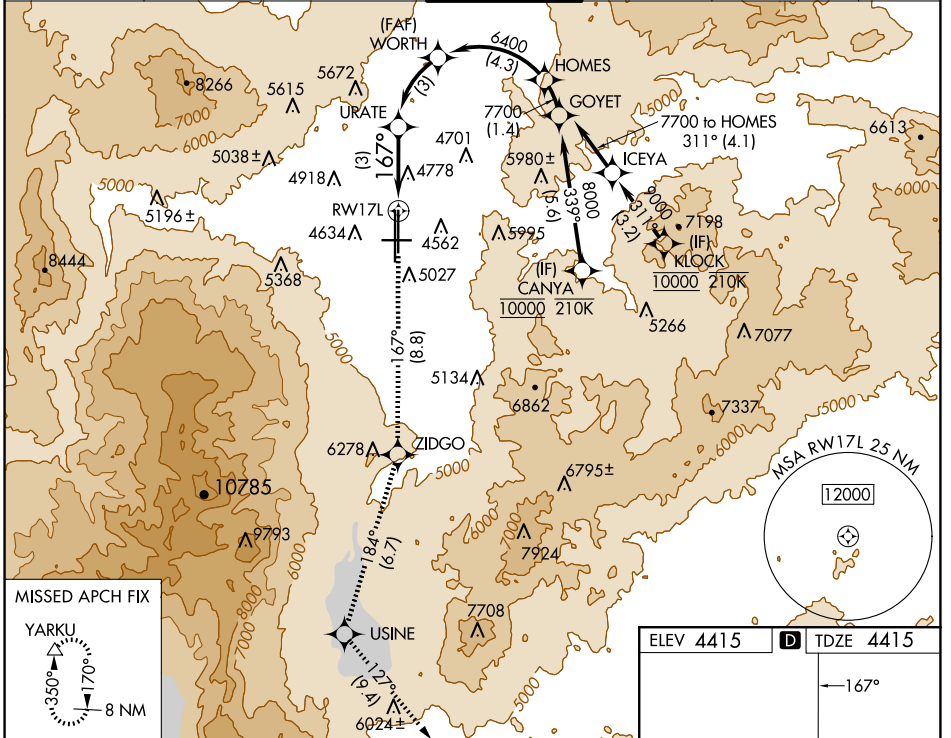
APP CRS	Rwy Idg	<b>9000</b>
<b>167°</b>	TDZE	<b>4415</b>
	Apt Elev	<b>4415</b>

# RNAV (RNP) Y RWY 17L

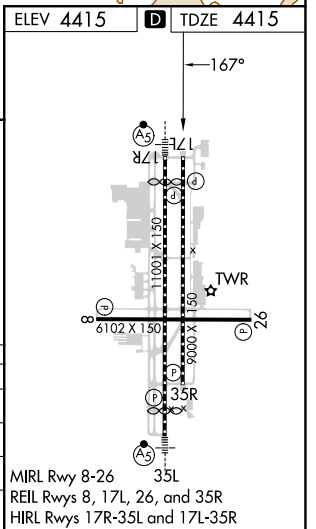
RENO/TAHOE INTL (RNO)

RNP AR APCH - GPS.		MISSED APPROACH: Climb to 13000 on track 167° to ZIDGO and on track 184° to USINE and on track 127° to YARKU and hold, continue climb-in-hold to 13000. *Missed approach requires minimum climb of 252 feet per NM to 7200. #Missed approach requires minimum climb of 203 feet per NM to 5040.	
-13°C	For uncompensated Baro-VNAV systems, procedure NA below -9°C or above 54°C.		

D-ATIS	NORCAL APP CON	RENO TOWER	GND CON	CLNC DEL	CPDLC
<b>135.8 363.0</b>	<b>119.2 279.55 126.3 353.9</b>	<b>118.7 257.8</b>	<b>121.9 348.6</b>	<b>124.9 370.85</b>	



13000	ZIDGO	USINE	YARKU	See planview for multiple IF locations.	
↑ tr 167°	 tr 184°	 tr 127°		WORTH	HOMES
URATE		6400	7700		
RWY 17L		5445	6400	GP 3.00° TCH 75	
3 NM		3 NM	4.3 NM		
CATEGORY	A	B	C	D	
RNP 0.12 DA*	4754-1		339 (400-1)		
RNP 0.17 DA#	5017-1¾		602 (700-1¾)		
RNP 0.30 DA	5067-1⅞		652 (700-1⅞)		



**AUTHORIZATION REQUIRED**

SW-4, 20 MAR 2025 to 17 APR 2025

SW-4, 20 MAR 2025 to 17 APR 2025