

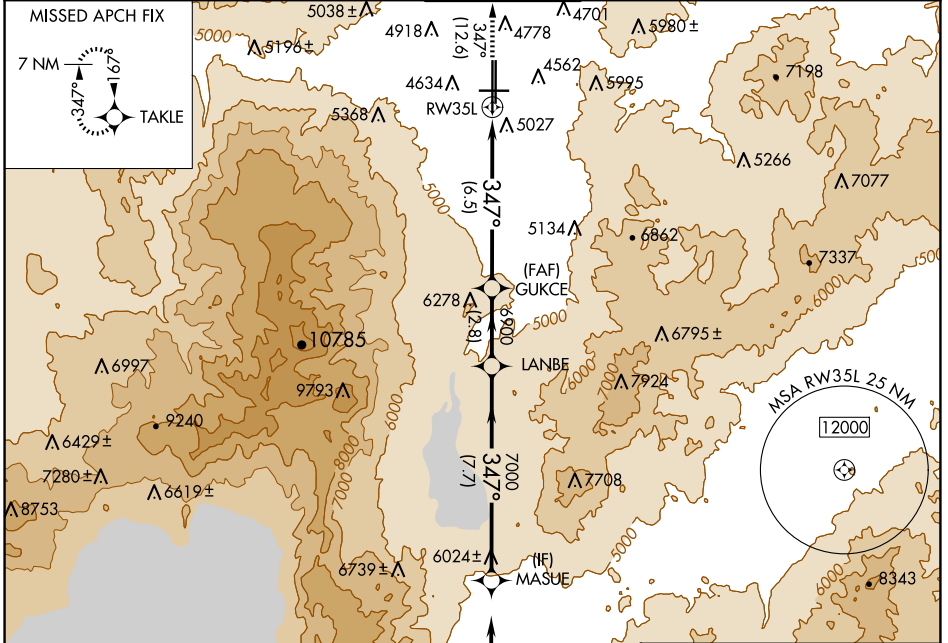
RNAV (RNP) Z RWY 35L

RENO/TAHOE INTL (RNO)

APP CRS 347°	Rwy Idg 10011
	TDZE 4410
	Apt Elev 4415

RNP AR APCH - GPS.		MALSR	MISSED APPROACH: Climb to 11000 on track 347° to TAKLE and hold, continue climb-in-hold to 11000. *Missed approach requires minimum climb of 300 feet per NM to 7140.	
<p>For uncompensated Baro-VNAV systems, procedure NA below -9°C or above 35°C. -13°C</p>				

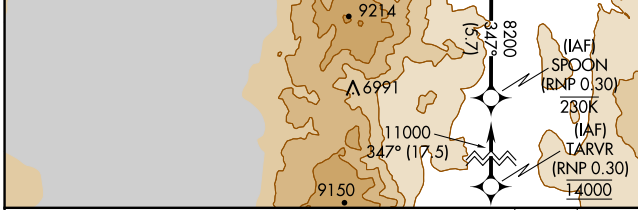
D-ATIS 135.8 363.0	NORCAL APP CON 119.2 279.55 126.3 353.9	RENO TOWER 118.7 257.8	GND CON 121.9 348.6	CLNC DEL 124.9 370.85	CPDLC
------------------------------	---	----------------------------------	-------------------------------	---------------------------------	-------



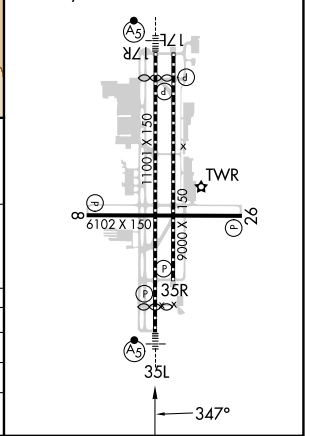
SW-4, 20 MAR 2025 to 17 APR 2025

SW-4, 20 MAR 2025 to 17 APR 2025

ELEV 4415	TDZE 4410
REIL Rwy 8, 17L, 26, and 35R	
HIRL Rwy 17R-35L and 17L-35R	
MIRL Rwy 8-26	



MASUE	LANBE	GUKCE	11000	TAKLE
8200		6900		
GP 3.50° TCH 72				
7.7 NM		2.8 NM	6.5 NM	



CATEGORY	A	B	C	D
RNP 0.10 DA*		4736-1/2	326 (400-1/2)	
RNP 0.30 DA		5349-2	939 (1000-2)	

AUTHORIZATION REQUIRED