

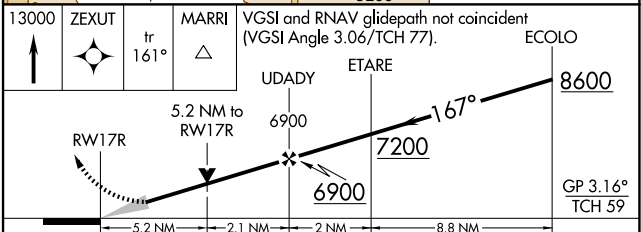
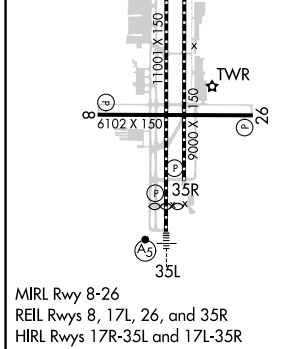
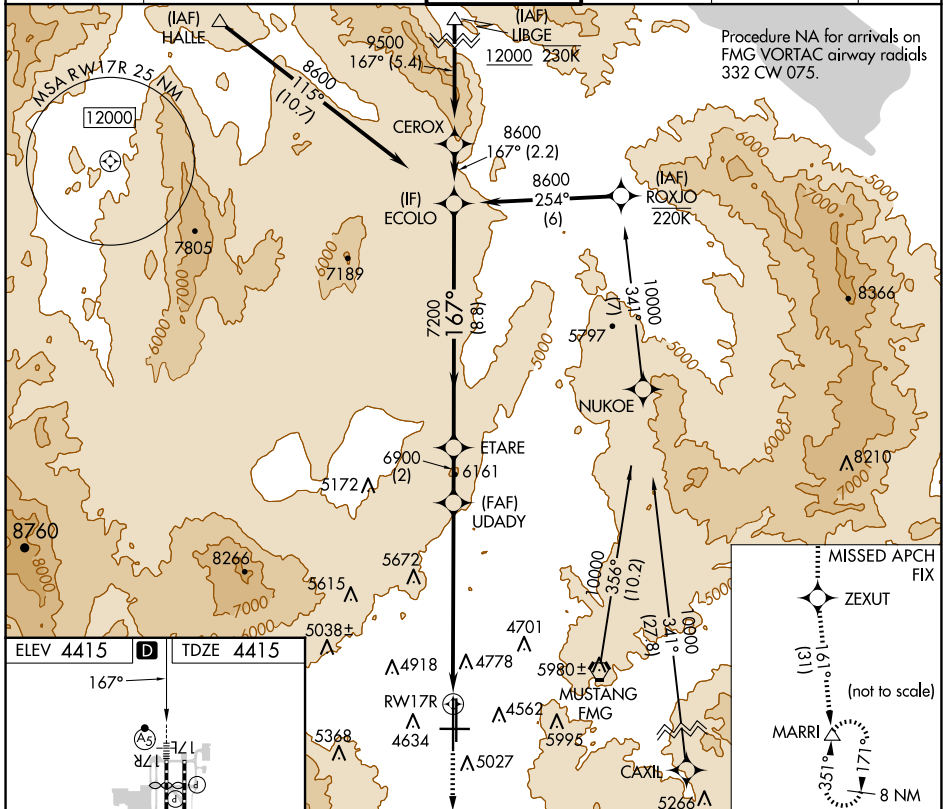
WAAS CH 78309 W17B	APP CRS 167°	Rwy Idg TDZE Apt Elev	10001 4415 4415
--	------------------------	-----------------------------	--

RNAV (GPS) X RWY 17R

RENO/TAHOE INTL (RNO)

RNP APCH - GPS.	MALSR	MISSED APPROACH: Climb to 13000 direct ZEXUT and on track 161° to MARRI and hold.
<p>▼ For inop ALS, increase LPV all Cats visibility to 2 1/2 SM. ▲ Inop table does not apply to LNAV all Cats.</p> <p>⊞ -13°C</p>		

D-ATIS 135.8 363.0	NORCAL APP CON 119.2 279.55 126.3 353.9	RENO TOWER 118.7 257.8	GND CON 121.9 348.6	CLNC DEL 124.9 370.85	CPDLC
------------------------------	---	----------------------------------	-------------------------------	---------------------------------	-------



CATEGORY	A	B	C	D
LPV DA	5239-1 7/8 824 (900-1%)			
LNAV MDA	6200/40 1785 (1800-3/4)	6200/55 1785 (1800-1)	6200-3	1785 (1800-3)

SW-4, 20 MAR 2025 to 17 APR 2025

SW-4, 20 MAR 2025 to 17 APR 2025