

SPARKS ONE DEPARTURE (OBSTACLE)

AL-346 (FAA)

RENO/TAHOE INTL (RNO)
RENO, NEVADA

TAKEOFF MINIMUMS

Rwy 8: NA - Terrain.

Rwy 17L: 600-1 $\frac{3}{8}$ with minimum climb of 415' per NM to 8700 or standard with minimum climb of 745' per NM to 7200, or 3200-3 for VCOA.

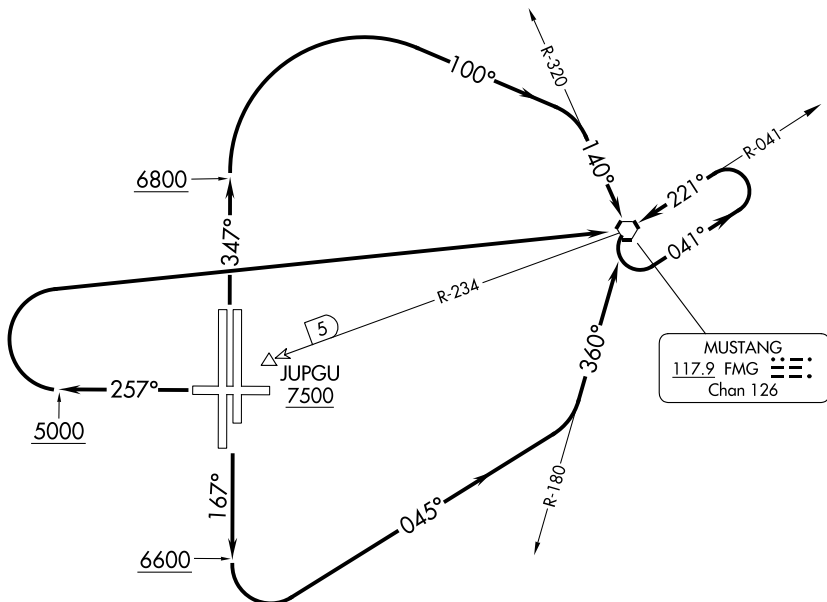
Rwy 17R: Standard with minimum climb of 420' per NM to 8700, or 3200-3 for VCOA.

Rwy 26: Standard with minimum climb of 485' per NM to 7900, or 3200-3 for VCOA.

Rwy 35L: Standard with minimum climb of 375' per NM to 8600, or 3200-3 for VCOA.

Rwy 35R: 400-1 $\frac{1}{2}$ with a minimum climb of 270' per NM to 8600 or standard with a minimum climb of 420' per NM to 7400, or 3200-3 for VCOA.

NORCAL DEP CON
119.2 279.55 (17L/R)
126.3 353.9 (Rwys 26, 35L/R)



NOTE: Chart not to scale.

(CONTINUED ON FOLLOWING PAGE)

DEPARTURE ROUTE DESCRIPTION

TAKEOFF RUNWAYS 17L/R: Climb on heading 167° to 6600, then climbing left turn heading 045° to intercept FMG VORTAC R-180 to FMG VORTAC, continue climb in FMG VORTAC holding pattern to cross FMG VORTAC at or above MEA/MCA for route of flight.

TAKEOFF RUNWAY 26: Climb on heading 257° to 5000, then climbing right turn direct FMG VORTAC, continue climb in FMG VORTAC holding pattern to cross FMG VORTAC at or above MEA/MCA for route of flight.

TAKEOFF RUNWAYS 35L/R: Climb on heading 347° to 6800, then climbing right turn heading 100° to intercept FMG VORTAC R-320 to FMG VORTAC, continue climb in FMG VORTAC holding pattern to cross FMG VORTAC at or above MEA/MCA for route of flight.

VCOA ALL RUNWAYS: Obtain ATC approval for VCOA when requesting IFR clearance.

Climb in visual conditions to cross JUPGU (FMG R-234/5 DME) at or above 7500 on FMG R-234 to FMG VORTAC, then continue climb in FMG VORTAC holding pattern to cross FMG VORTAC at or above MEA/MCA for route of flight.

SPARKS ONE DEPARTURE (OBSTACLE)

SW-4, 20 MAR 2025 to 17 APR 2025

SW-4, 20 MAR 2025 to 17 APR 2025