

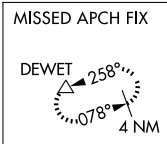
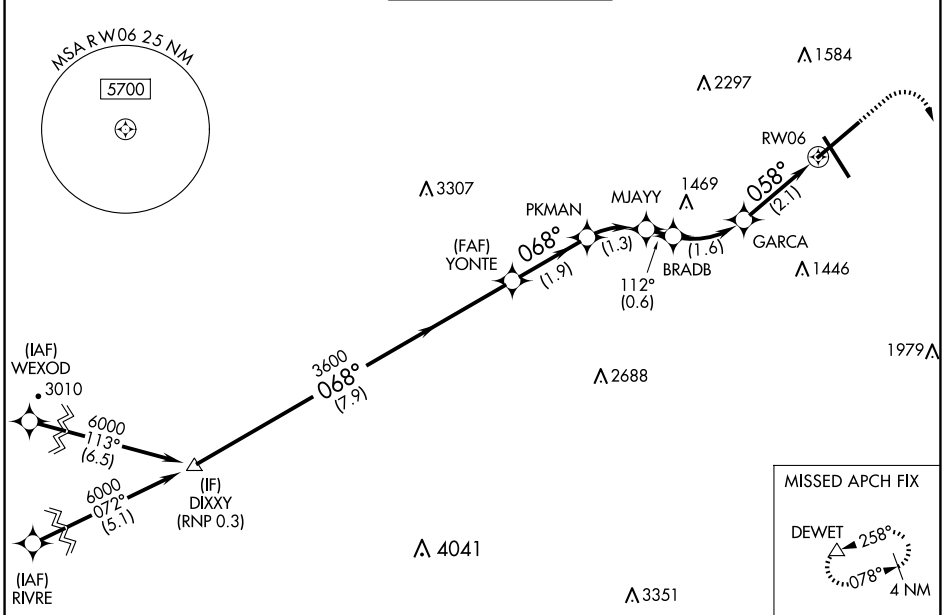
APP CRS	Rwy Idg	6800
058°	TDZE	1175
	Apt Elev	1175

RNAV (RNP) Z RWY 6

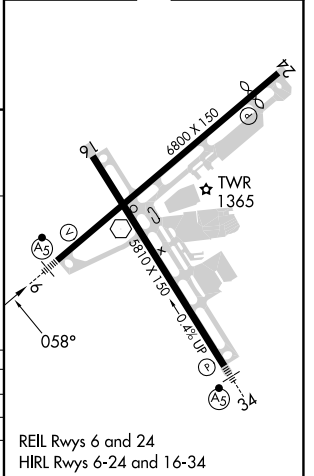
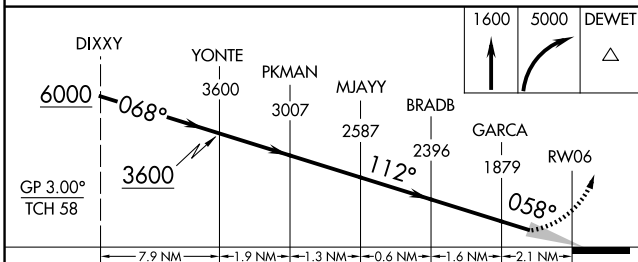
ROANOKE/BLACKSBURG RGNL (WOODRUM FLD) (R.O.A)

RNP AR APCH - GPS.	MALSRL	MISSED APPROACH: (Do not exceed 240K until DEWET) Climb to 1600 then climbing right turn to 5000 direct DEWET and hold, continue climb-in-hold to 5000. *Missed approach requires minimum climb of 370 feet per NM to 2900.
-13°C For uncompensated Baro-VNAV systems, procedure NA below -14°C or above 54°C. For inop ALS, increase RNP 0.20 all Cats visibility to 3/8 SM.		

ATIS 132,375	ROANOKE APP CON 126.9 339.8	ROANOKE TOWER 118.3 257.8	GND CON 121.9 257.8	CLNC DEL 119.7
------------------------	---------------------------------------	-------------------------------------	-------------------------------	--------------------------



ELEV 1175	D TDZE 1175
-----------	--------------------



CATEGORY	A	B	C	D
RNP 0.20 DA*		1444-1/2	269 (300-1/2)	
RNP 0.30 DA		1605-3/4	430 (500-3/4)	

AUTHORIZATION REQUIRED

REIL Rwy's 6 and 24
HIRL Rwy's 6-24 and 16-34

NE-3, 20 MAR 2025 to 17 APR 2025

NE-3, 20 MAR 2025 to 17 APR 2025