

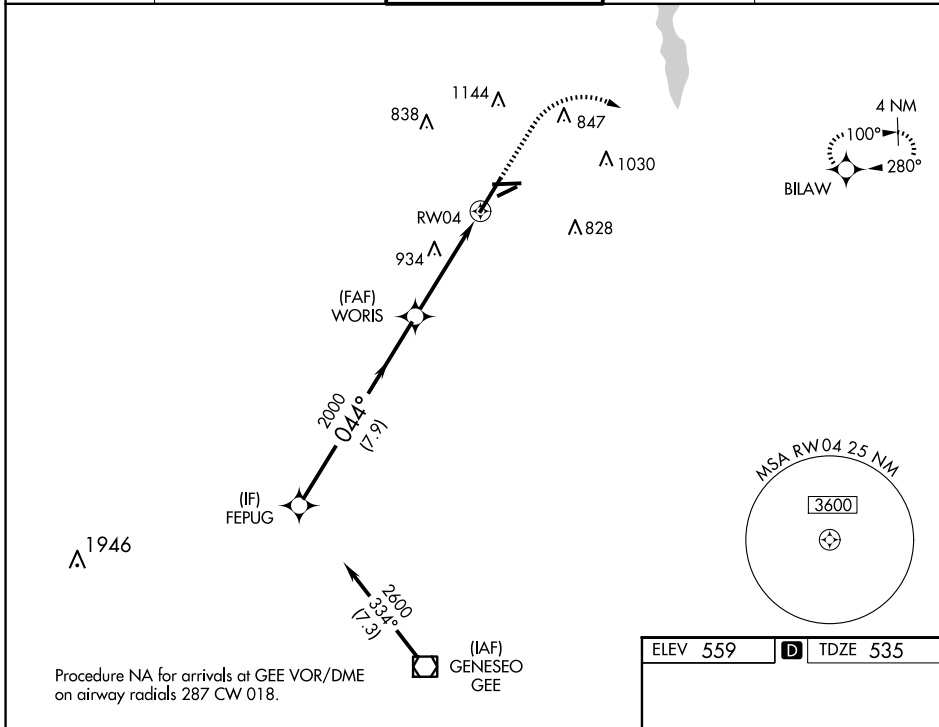
WAAS CH 45611 W04A	APP CRS 044°	Rwy Idg 8001 TDZE 535 Apt Elev 559
--	------------------------	---

RNAV (GPS) RWY 4

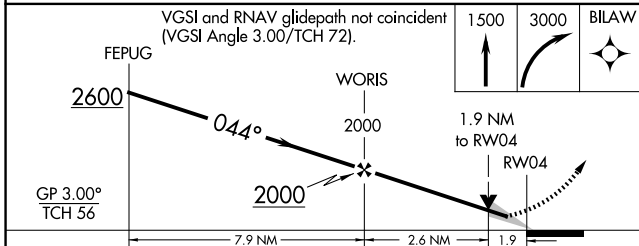
FREDERICK DOUGLASS/GREATER ROCHESTER INTL (ROC)

RNP APCH - GPS.	ALSF-2	MISSED APPROACH: Climb to 1500 then climbing right turn to 3000 direct BILAW and hold.
<p>▼ For uncompensated Baro-VNAV systems, LNAV/VNAV NA below -18°C or above 54°C. For inop ALS, increase LNAV Cats C/D visibility to 1 7/8 SM.</p> <p>▲</p>		

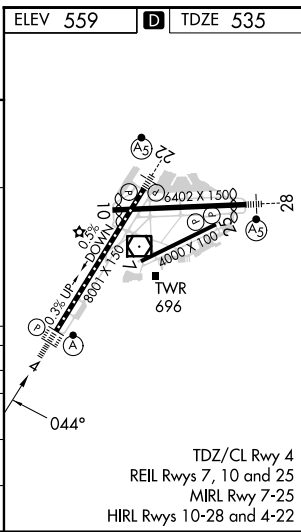
ATIS 124.825	ROCHESTER APP CON 119.55 269.6	ROCHESTER TOWER 118.3 254.3	GND CON 121.7	CLNC DEL 118.8 343.65
------------------------	--	---------------------------------------	-------------------------	---------------------------------



Procedure NA for arrivals at GEE VOR/DME on airway radials 287 CW 018.



CATEGORY	A	B	C	D
LPV DA		735/18	200 (200-1/2)	
LNAV/VNAV DA		1290-2 1/4	755 (800-2 1/4)	
LNAV MDA	1200/24	665 (700-1/2)	1200-1 1/2	665 (700-1 1/2)
CIRCLING	1200-1	641 (700-1)	1500-2 3/4 941 (1000-2 3/4)	1500-3 941 (1000-3)



TDZ/CL Rwy 4
REIL Rws 7, 10 and 25
MIRL Rwy 7-25
HIRL Rws 10-28 and 4-22

RNAV (GPS) RWY 4

NE-2, 20 MAR 2025 to 17 APR 2025

NE-2, 20 MAR 2025 to 17 APR 2025