

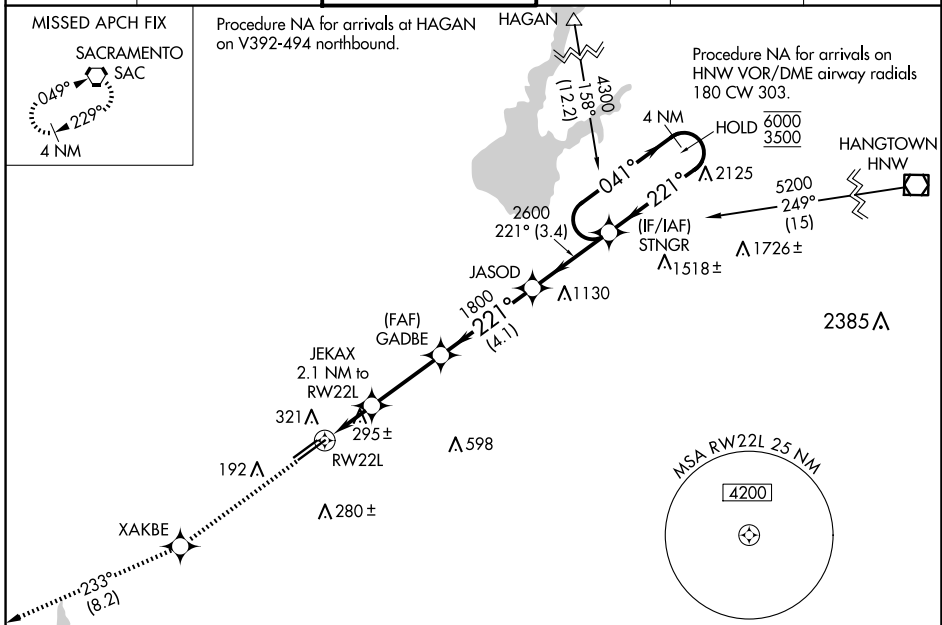
WAAS CH <b>40225</b> <b>W22A</b>	APP CRS <b>221°</b>	Rwy Idg <b>11301</b> TDZE <b>98</b> Apt Elev <b>98</b>
--	------------------------	--

# RNAV (GPS) RWY 22L

SACRAMENTO MATHER (MHR)

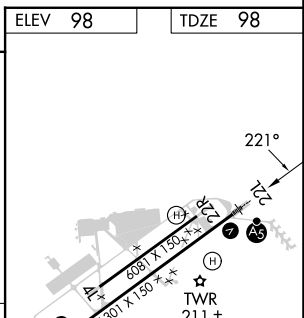
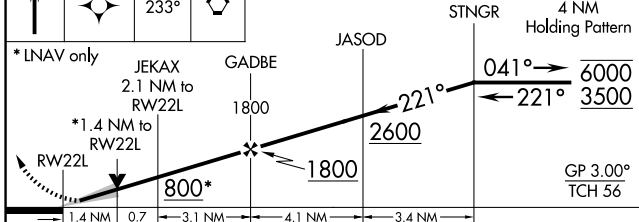
RNP APCH.	MALSRL	MISSED APPROACH: Climb to 3000 direct XAKBE and on track 233° to SAC VORTAC and hold.
<p>⚠ Circling NA northwest of Rwy 4R-22L. For uncompensated Baro-VNAV systems, LNAV/VNAV NA below -15°C or above 54°C. For inop ALS, increase LNAV/VNAV all Cats visibility to 1½ SM and LNAV Cat C/D visibility to 1¾ SM.</p>		

ATIS <b>118.325</b>	NORCAL APP CON <b>127.4 317.5</b>	MATHER TOWER ★ <b>120.65 (CTAF) 0 282.25</b>	GND CON <b>121.85 307.9</b>	CLNC DEL <b>121.85 307.9</b>	UNICOM <b>122.95</b>
------------------------	--------------------------------------	---	--------------------------------	---------------------------------	-------------------------



ELEV 98	TDZE 98
---------	---------

3000 XAKBE SAC VGSI and RNAV glidepath not coincident (VGSI Angle 3.00/TCH 50).



CATEGORY	A	B	C	D
LPV DA	298-½		200 (200-½)	
LNAV/VNAV DA	517-¾		419 (500-¾)	
LNAV MDA	580-½	482 (500-½)	580-1	482 (500-1)
CIRCLING	580-1	482 (500-1)	600-1½ 502 (600-1½)	800-2¼ 702 (800-2¼)

HIRL Rwy 4R-22L 0

SW-2, 20 MAR 2025 to 17 APR 2025

SW-2, 20 MAR 2025 to 17 APR 2025