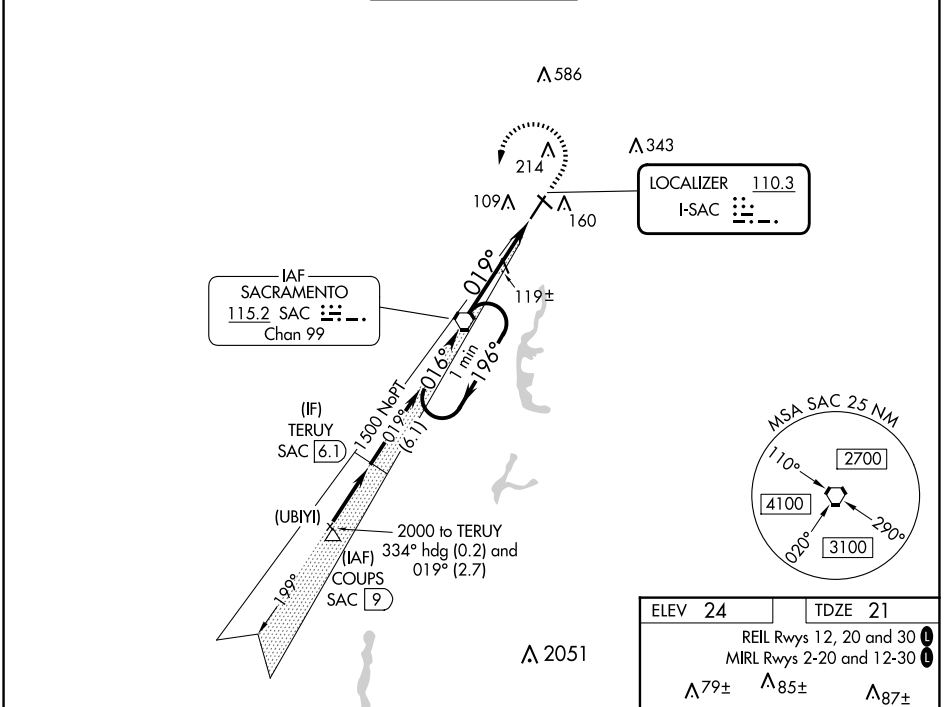


LOC I-SAC <b>110.3</b>	APP CRS <b>019°</b>	Rwy Idg <b>5503</b> TDZE <b>21</b> Apt Elev <b>24</b>
---------------------------	------------------------	---

**ILS or LOC RWY 2**  
SACRAMENTO EXEC (SAC)

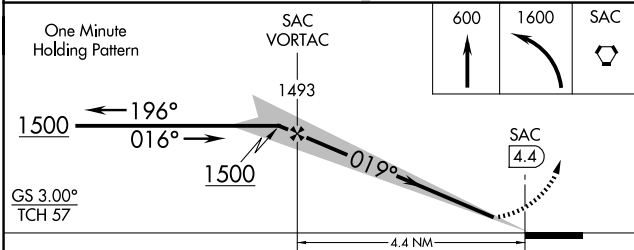
<p><b>▼</b> When local altimeter setting not received, use Sacramento Intl altimeter setting and increase DA to 322 feet, increase all MDAs 40 feet and Circling Cat D visibility ¼ SM. Autopilot coupled approach NA below 335 feet. For inop MALSRS, increase S-ILS 2 all Cats visibility to ¾ SM and S-LOC 2 Cat C/D visibility to 1 SM. For inop MALSRS when using Sacramento Intl altimeter setting, increase S-ILS 2 all Cats visibility to ¾ SM.</p>	<p>MALSRS </p>	<p>MISSED APPROACH: Climb to 600 then climbing left turn to 1600 direct SAC VORTAC and hold.</p>
---	--------------------	--

ATIS <b>125.5</b>	NORCAL APP CON <b>125.25 257.9</b>	EXEC TOWER* <b>119.5 (CTAF) 278.8</b>	GND CON <b>125.0</b>	UNICOM <b>122.95</b>
----------------------	---------------------------------------	--	-------------------------	-------------------------



SW-2, 20 MAR 2025 to 17 APR 2025

SW-2, 20 MAR 2025 to 17 APR 2025



ELEV 24	TDZE 21
REIL Rwys 12, 20 and 30 MIRL Rwys 2-20 and 12-30	
A 79±	A 85±
A 183	A 61±
A 150	A 100±
A 76±	A 61±
FAF to MAP 4.4 NM	
Knots	60 90 120 150 180
Min:Sec	4:24 2:56 2:12 1:46 1:28