

GATEWAY ONE DEPARTURE

AL-360 (FAA)

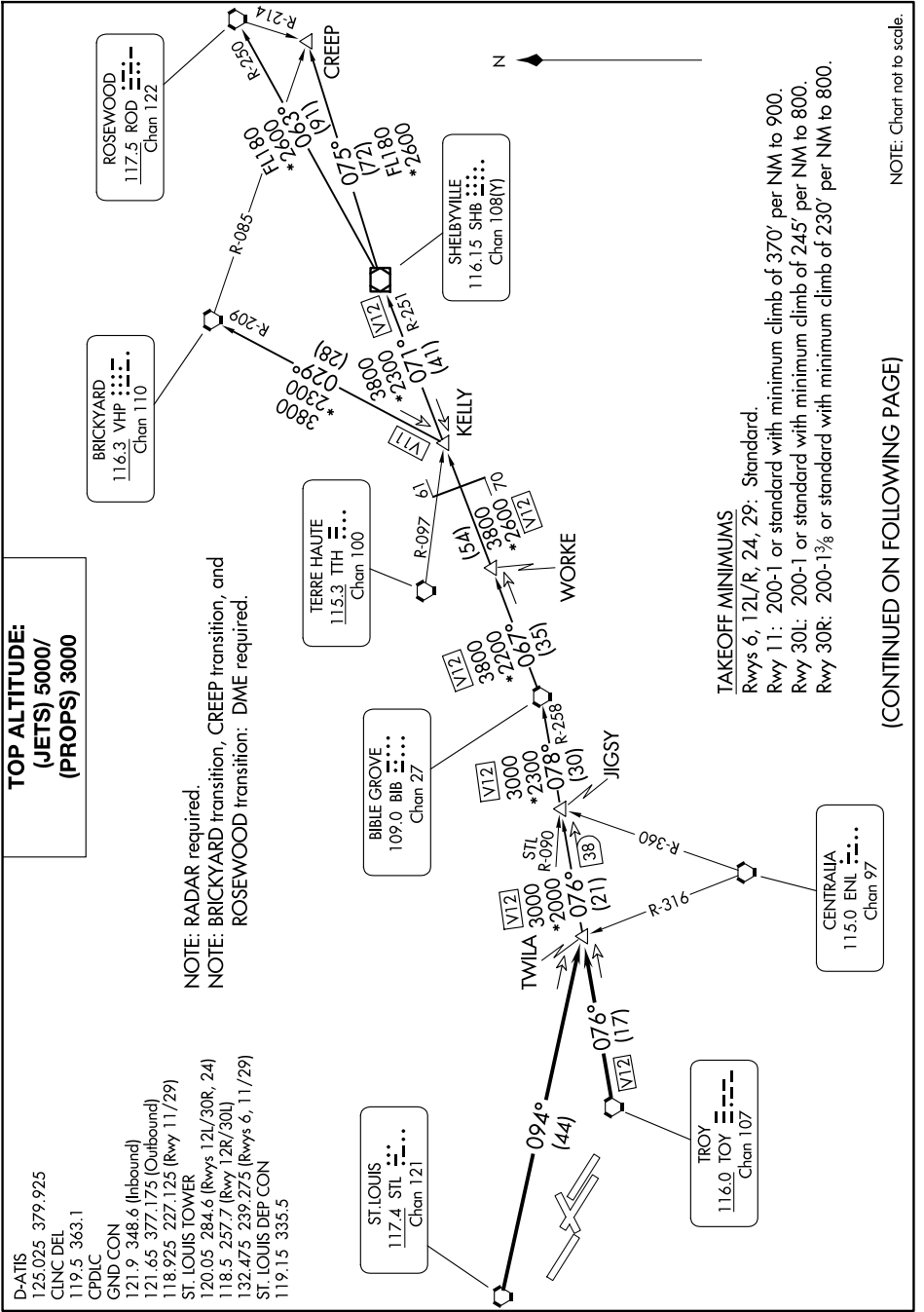
ST LOUIS LAMBERT INTL (STL)
ST. LOUIS, MISSOURI

NC-3, 20 MAR 2025 to 17 APR 2025

**TOP ALTITUDE:
(JETS) 5000/
(PROPS) 3000**

- D-ATIS 125.025 379.925
- CINCL DEL 119.5 363.1
- CPDLC
- GND CON 121.9 348.6 (Inbound)
- 121.65 377.175 (Outbound)
- 118.925 227.125 (Rwy 11/29)
- ST. LOUIS TOWER 120.05 284.6 (Rwys 12L/30R, 24)
- 118.5 257.7 (Rwy 12R/30L)
- 132.475 239.275 (Rwys 6, 11/29)
- ST. LOUIS DEP CON 119.15 335.5

NOTE: RADAR required.
NOTE: BRICKYARD transition, CREEP transition, and ROSEWOOD transition: DME required.



TAKEOFF MINIMUMS
 Rwys 6, 12L/R, 24, 29: Standard.
 Rwy 11: 200-1 or standard with minimum climb of 370' per NM to 900.
 Rwy 30L: 200-1 or standard with minimum climb of 245' per NM to 800.
 Rwy 30R: 200-1 3/4 or standard with minimum climb of 230' per NM to 800.

(CONTINUED ON FOLLOWING PAGE)

NOTE: Chart not to scale.

GATEWAY ONE DEPARTURE (GATWY1.TWILA) 08NOV18

ST. LOUIS, MISSOURI
ST LOUIS LAMBERT INTL (STL)

NC-3, 20 MAR 2025 to 17 APR 2025