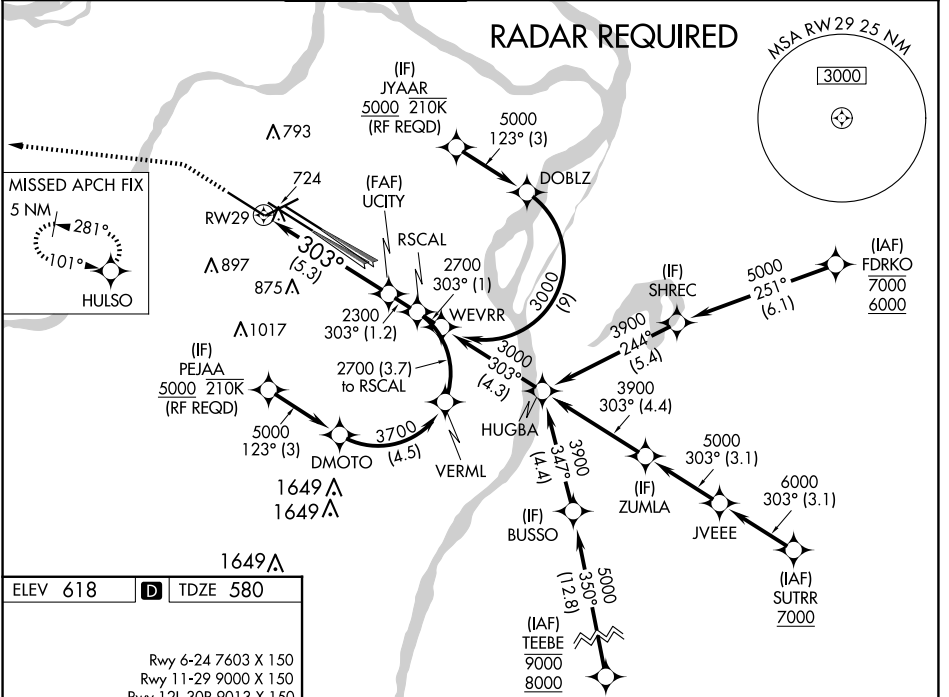


APP CRS <b>303°</b>	Rwy Idg TDZE Apt Elev	<b>9000</b> <b>580</b> <b>618</b>
------------------------	-----------------------------	---

# RNAV (RNP) Z RWY 29

ST LOUIS LAMBERT INTL (STL)

<p>▼ For uncompensated Baro-VNAV systems, procedure NA below -16°C (4°F) or above 54°C (130°F). Simultaneous approach authorized with Rwy 30L/R. Use of FD or AP providing RNAV track guidance required during simultaneous operations. GPS required. For inop ALS, increase RNP 0.12 all Cats visibility to RVR 6000, increase RNP 0.17 all Cats visibility to 1½, and increase RNP 0.30 all Cats visibility to 1¾.</p>		<p>ALSF-2</p>	<p>MISSED APPROACH: Climb to 1100 then climbing left turn to 3000 direct HULSO and hold.</p>		
<p>D-ATIS <b>125.025</b> <b>379.925</b></p>	<p>ST. LOUIS APP CON <b>132.125 360.6</b></p>	<p>ST. LOUIS TOWER <b>132.475 239.275</b></p>	<p>GND CON <b>121.9 348.6</b> (Inbound) <b>121.65 377.175</b> (Outbound) <b>118.925 227.125</b> (Rwy 11/29)</p>	<p>CLNC DEL <b>119.5 363.1</b></p>	<p>CPDLC</p>



ELEV 618 **D** TDZE 580

Rwy 6-24 7603 X 150  
 Rwy 11-29 9000 X 150  
 Rwy 12L-30R 9013 X 150  
 Rwy 12R-30L 11020 X 150

HIRL all Rwys  
 TDZ/CL Rwys 11, 12L, 12R, 29, and 30R

1100 3000 HULSO

VGSI and RNAV glidepath not coincident (VGSI Angle 3.00/TCH 73).

See Planview for multiple IF locations.

RW29

UCITY 2300 303° 2700  
 RSCAL 2700  
 GP 3.00° TCH 56

CATEGORY	A	B	C	D
RNP 0.12 DA		963/50	383 (400-1)	
RNP 0.17 DA		1035/50	455 (500-1)	
RNP 0.30 DA		1088/60	508 (500-1¼)	

**AUTHORIZATION REQUIRED**

NC-3, 20 MAR 2025 to 17 APR 2025

NC-3, 20 MAR 2025 to 17 APR 2025