

ST. LOUIS, MISSOURI

# TACAN RWY 12R

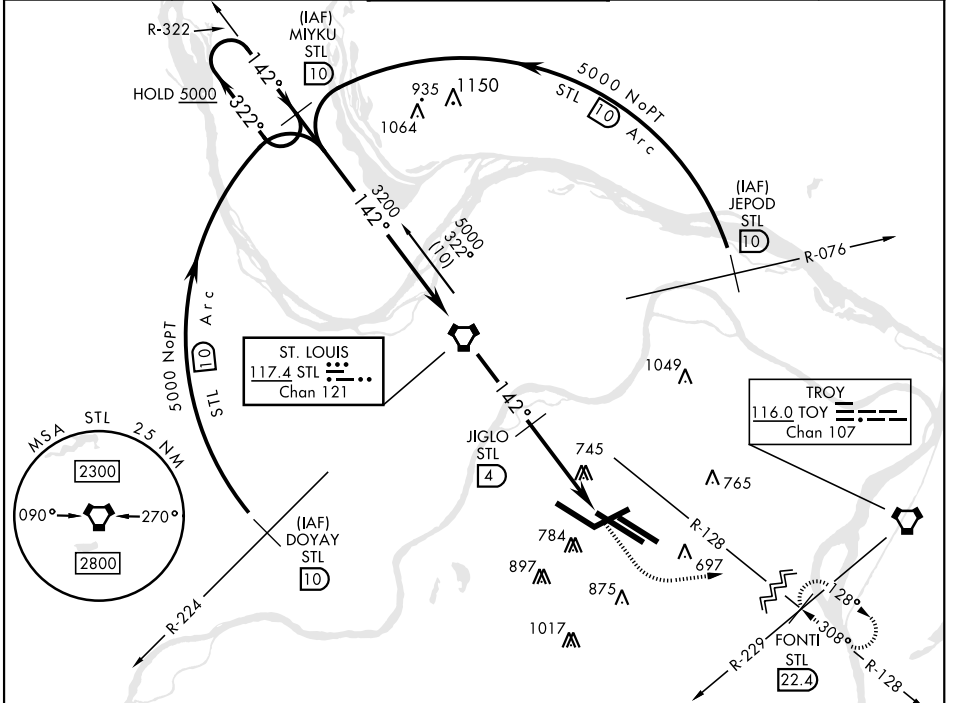
VORTAC STL <b>117.4</b> Chan <b>121</b>	APCH CRS <b>142°</b>	Rwy Ildg <b>10,552</b> TDZE <b>540</b> Arpt Elev <b>618</b>
---	-------------------------	---

[USAf]

ST. LOUIS LAMBERT INTL (KSTL)

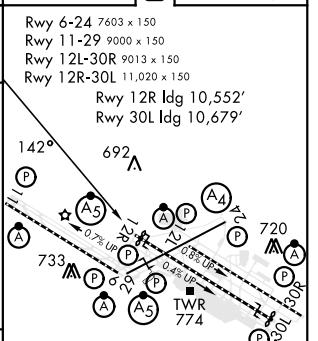
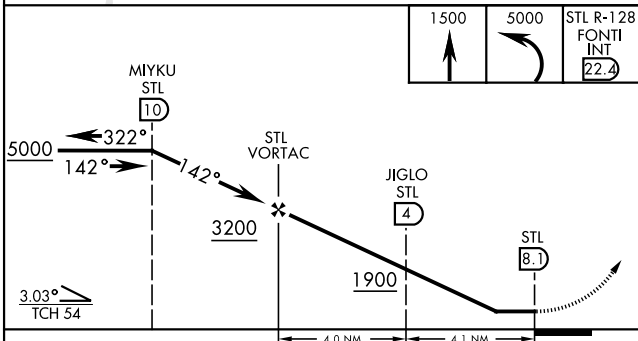
<p>▼ * Inoperative table does not apply.</p> <p>▲ NA Visibility reduction by helicopters not authorized.</p>	<p>MALSR</p>	<p>MISSED APPROACH: Climb to 1500 then climbing left turn to 5000 intercept STL VORTAC R-128 to FONTI INT/STL 22.4 DME and hold, continue climb in hold.</p>
--	--------------	--

<p>ATIS <b>125.025 379.925</b></p>	<p>ST. LOUIS APP CON <b>121.02 338.25</b></p>	<p>N <b>120.05</b> W <b>284.6</b></p>	<p>ST. LOUIS TOWER <b>132.475</b> S <b>239.275</b></p>	<p>S <b>118.5</b> W <b>257.7</b></p>	<p>GND CON (Inlbd) <b>121.9 348.6</b> (Outlbd) <b>121.65 377.175</b> (West) <b>118.925 227.125</b></p>	<p>CLNC DEL <b>119.5 363.1</b></p>
--	---	---	--	--	--	--



EMERG SAFE ALT 100 NM 3500

ELEV	618	TDZE	540
------	-----	------	-----



CATEGORY	A	B	C	D	E
S-12R *	1060/50	520 (500-1)	1060-1½ 520(500-1½)	1060-1¾	520 (500-1¾)
CIRCLING	NOT AUTHORIZED				

ST. LOUIS, MISSOURI 38°45'N-90°22'W ST. LOUIS LAMBERT INTL (KSTL)

Amdt 1 25079

# TACAN RWY 12R

NC-3, 20 MAR 2025 to 17 APR 2025

NC-3, 20 MAR 2025 to 17 APR 2025