

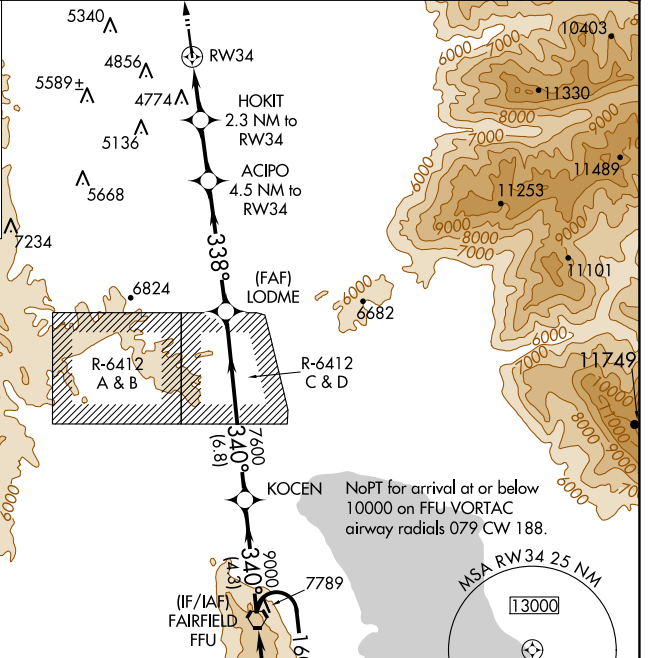
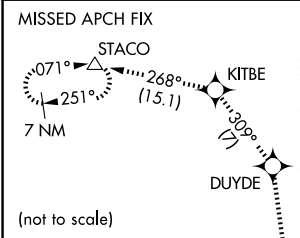
WAAS CH <b>82740</b> <b>W34A</b>	APP CRS <b>338°</b>	Rwy Idg TDZE Apt Elev	<b>5862</b> <b>4606</b> <b>4606</b>
--	------------------------	-----------------------------	---

# RNAV (GPS) RWY 34

SOUTH VALLEY RGNL (U42)

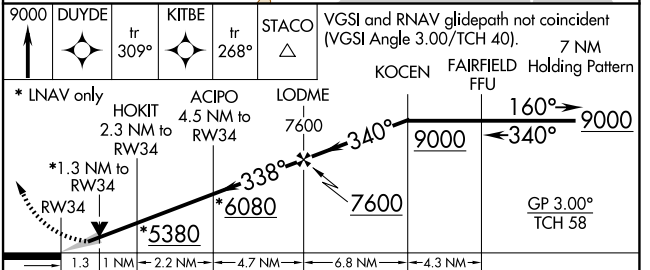
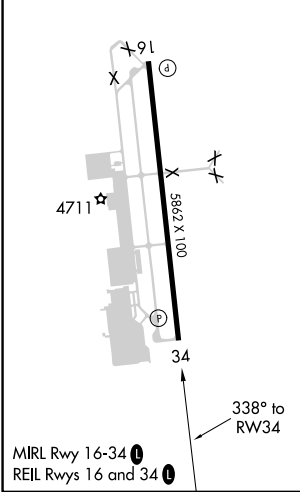
**Baro-VNAV NA. DME/DME RNP-0.3 NA.**  
**VDP NA when using Salt Lake City Intl altimeter setting.**  
**MISSED APPROACH: Climb to 9000 direct DUYDE and on track 309° to KITBE and on track 268° to STACO and hold.**

AWOS-3 <b>134.425</b>	SALT LAKE CITY APP CON <b>120.9 322.3</b>	CLNC DEL <b>127.0</b>	UNICOM <b>122.7 (CTAF) 0</b>
--------------------------	--	--------------------------	---------------------------------



ELEV 4606	TDZE 4606
-----------	-----------

All arrivals descend to 10000 in FFU VORTAC holding pattern before departing FFU VORTAC.



CATEGORY	A	B	C	D
LPV DA		4881-7/8	275 (300-7/8)	
LNAV/VNAV DA		5022-1 1/2	416 (500-1 1/2)	
LNAV MDA	5040-1	434 (500-1)	5040-1 1/4	434 (500-1 1/4)
CIRCLING	5160-1 554 (600-1)	5360-1 754 (800-1)	5780-3 1174 (1200-3)	6040-3 1434 (1500-3)

SW-4, 20 MAR 2025 to 17 APR 2025

SW-4, 20 MAR 2025 to 17 APR 2025