

# PLYA TWO ARRIVAL (RNAV)

AL-373 (FAA)

SAN DIEGO INTL (SAN)  
SAN DIEGO, CALIFORNIA

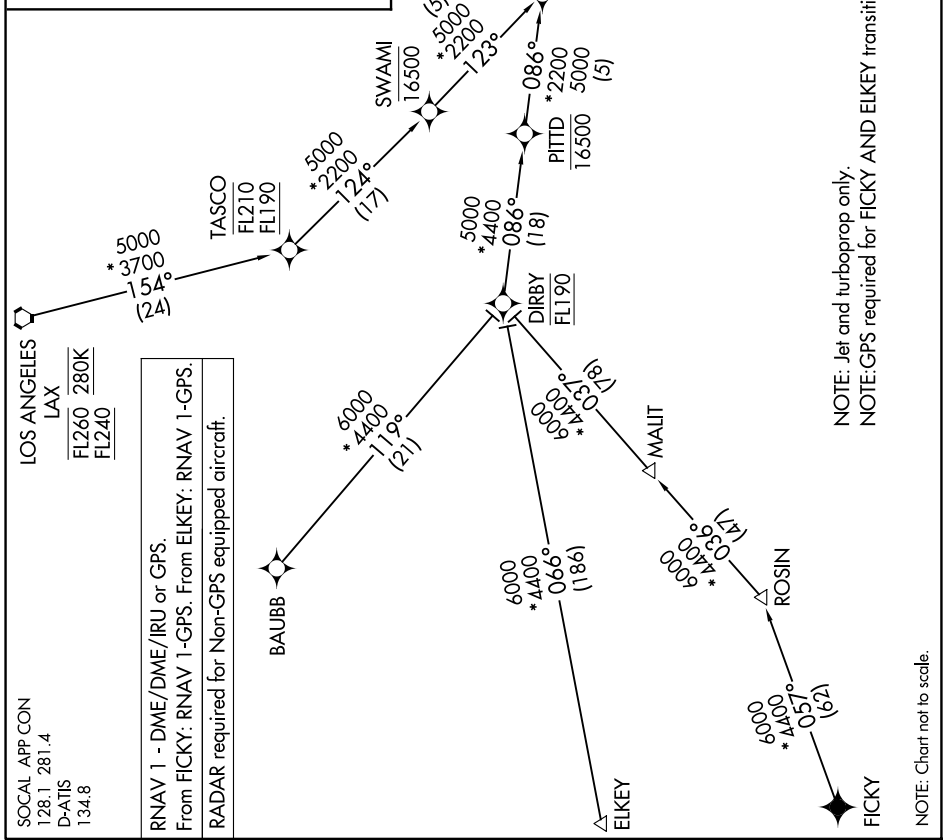
SW-3, 20 MAR 2025 to 17 APR 2025

**ARRIVAL ROUTE DESCRIPTION**

BAUBB TRANSITION (BAUBB.PLYA2)  
ELKEY TRANSITION (ELKEY.PLYA2)  
FICKY TRANSITION (FICKY.PLYA2)  
LOS ANGELES TRANSITION (LAX.PLYA2)

From PLYA on track 126° to cross MNLTY at or above 4000.

**LANDING RUNWAY 9:** From MNLTY on track 120° to cross SARGs at or above 2100. Expect ILS or LOC RWY 9 approach.



**LOS ANGELES LAX**  
 FL260 280K  
 FL240

**RNAV 1 - DME/DME/IRU or GPS.**  
 From FICKY: RNAV 1-GPS. From ELKEY: RNAV 1-GPS.  
 RADAR required for Non-GPS equipped aircraft.

NOTE: Jet and turboprop only.  
 NOTE:GPS required for FICKY AND ELKEY transitions.

NOTE: Chart not to scale.

# PLYA TWO ARRIVAL (RNAV)

SAN DIEGO, CALIFORNIA  
SAN DIEGO INTL (SAN)

SW-3, 20 MAR 2025 to 17 APR 2025