

GAUCH THREE DEPARTURE (RNAV)

AL-378 (FAA)

SW-3, 20 MAR 2025 to 17 APR 2025

SANTA BARBARA DEP CON
120.55 319.15
ATIS
132.65
CLNC DEL
132.9
GND CON
121.7
SANTA BARBARA TOWER*
119.7 254.35

MORRO BAY
MGO

SPLNT

GAUCH
6000

**TOP ALTITUDE:
ASSIGNED BY ATC**

DEPARTURE ROUTE DESCRIPTION

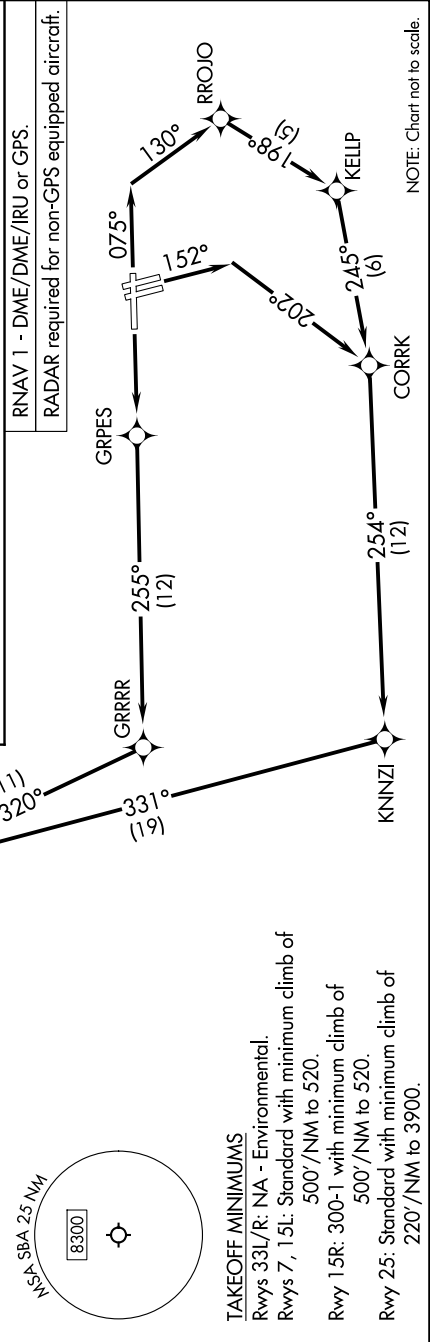
TAKEOFF RUNWAY 7: Climb on heading 075° to intercept course 130° to RROJO, then on track 198° to KELLP, then on track 245 to CORRK, then on track 254° to KNNZI, then on track 331° to cross GAUCH at or above 6000, thence

TAKEOFF RUNWAYS 15L/R: Climb on heading 152° to intercept course 202° to CORRK, then on track 254° to KNNZI, then on track 331° to cross GAUCH at or above 6000, thence

TAKEOFF RUNWAY 25: Climb direct GRPES, then on track 255° to GRRRR, then on track 320° to cross GAUCH at or above 6000, thence

.on (transition). Maintain ATC assigned altitude. Expect final altitude 10 minutes after departure.

MORRO BAY TRANSITION (GAUCH3.MGO)
SPLNT TRANSITION (GAUCH3.SPLNT)



SW-3, 20 MAR 2025 to 17 APR 2025