

LOC/DME I-SBA 110.3 Chan 40	APP CRS 075°	Rwy Idg 6052 TDZE 13 Apt Elev 14
--	------------------------	---

ILS or LOC RWY 7

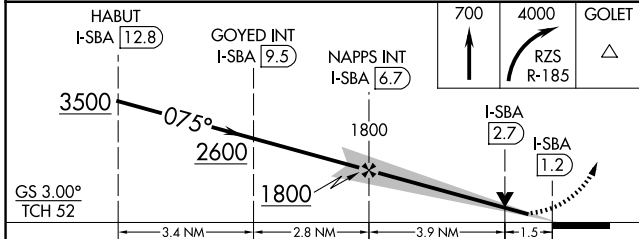
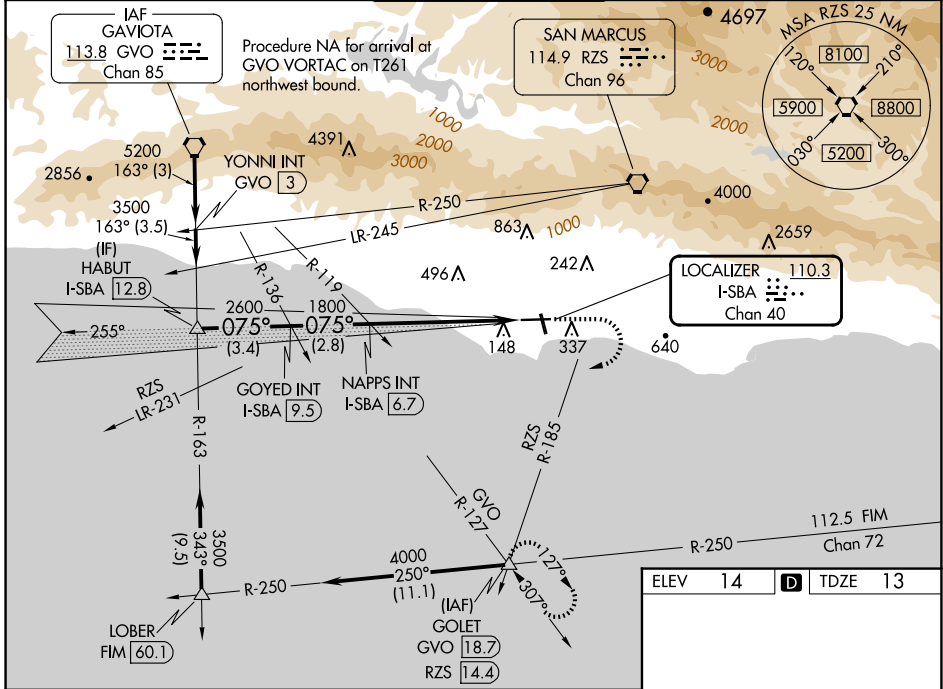
SANTA BARBARA MUNI (SBA)

⚠ VDP NA when using OXR altimeter setting. Circling Rwy 15 L/R and 33 L/R NA at night. Rwy 7 helicopter visibility reduction below RVR 4000 NA. When local altimeter setting not received, use OXR altimeter setting and increase S-LS 7 DA to 386 feet; increase all MDAs 100 feet; and Circling visibility Cat A/C ¼ SM. For inop ALS when using OXR altimeter setting, increase S-ILS 7 all Cats visibility to RVR 5000, and S-LOC 7 Cat A/B to RVR 5500. Circling NA for Cats C and D north of Rwy 7-25. For inop ALS, increase S-ILS 7 all Cats visibility to RVR 4500 and S-LOC 7 Cat A/B to RVR 5500.

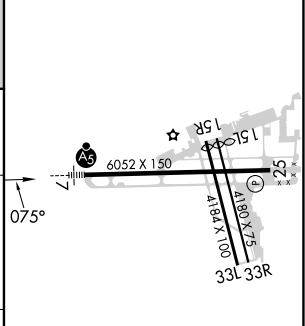
MISSED APPROACH: Climb to 700 then climbing right turn to 4000 on RZS VORTAC R-185 to GOLET INT/RZS 14.4 DME and hold, continue climb-in hold to 4000.



ATIS 132.65	SANTA BARBARA APP CON* 120.55 319.15 (151°-329°) 125.4 291.1 (330°-150°)	SANTA BARBARA TOWER* 119.7 (CTAF) 254.35	GND CON 121.7	CLNC IN-DEL 132.9	UNICOM 122.95
-----------------------	--	---	-------------------------	-----------------------------	-------------------------



ELEV 14	D	TDZE 13
---------	----------	---------



CATEGORY	A	B	C	D
S-ILS 7	303/40		290 (300-¾)	
S-LOC 7	560/40	547 (600-¾)		560/55 547 (600-1)
CIRCLING	800-1 786 (800-1)	840-1¼ 826 (900-1¼)	840-2½ 826 (900-2½)	1000-3 986 (1000-3)

FAF to MAP 5.5 NM					
Knots	60	90	120	150	180
Min:Sec	5:30	3:40	2:45	2:12	1:50

SW-3, 20 MAR 2025 to 17 APR 2025

SW-3, 20 MAR 2025 to 17 APR 2025