

VORTAC GVO 113.8 Chan 85	APP CRS 280°	Rwy Idg 6052 TDZE 14 Apt Elev 14
--	------------------------	---

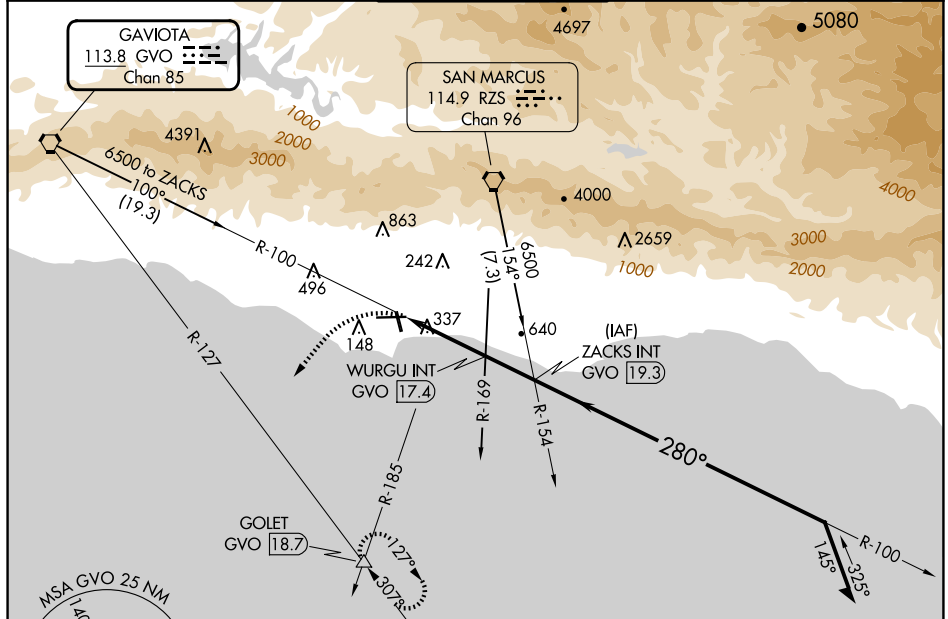
VOR RWY 25

SANTA BARBARA MUNI (SBA)

⚠ Circling Rwy 15L/R and 33L/R NA at night. Rwy 25 helicopter visibility reduction below 1 SM NA. Circling NA for Cats C and D north of Rwy 7-25. Procedure NA at night. When local altimeter setting not received, use OXR altimeter setting and increase all MDAs 100 feet and S-25 visibility Cat B/C/D ½ SM and Circling visibility Cat B/C ¼ SM.

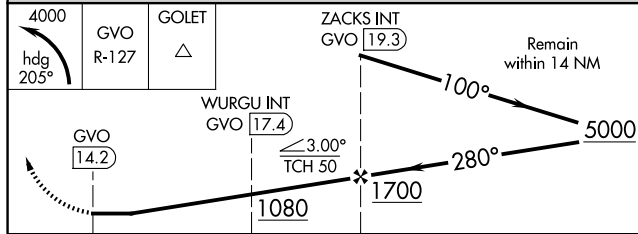
MISSED APPROACH: Climbing left turn to 4000 on heading 205° and GVO R-127 to GOLET INT and hold, continue climb-in-hold to 4000.

ATIS 132.65	SANTA BARBARA APP CON* 120.55 319.15 (151°-329°) 125.4 291.1 (330°-150°)	SANTA BARBARA TOWER* 119.7 (CTAF) 0 254.35	GND CON 121.7	CLNC DEL 132.9	UNICOM 122.95
-----------------------	--	---	-------------------------	--------------------------	-------------------------

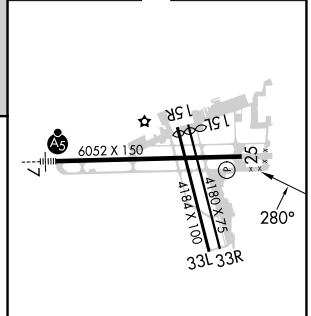


SW-3, 20 MAR 2025 to 17 APR 2025

SW-3, 20 MAR 2025 to 17 APR 2025



ELEV 14	D	TDZE 14
---------	----------	---------



HIRL Rwy 7-25
MIRL Rwy 15R-33L **1**
REIL Rwy 15R **1**
REIL Rwy 25

FAF to MAP 5.1 NM

Knots	60	90	120	150	180
Min:Sec	5:06	3:24	2:33	2:02	1:42

CATEGORY	A	B	C	D
S-25	920-1¼ 906 (1000-1¼)		920-2½ 906 (1000-2½)	
CIRCLING	920-1¼ 906 (1000-1¼)		920-2¾ 906 (1000-2¾)	960-3 946 (1000-3)