

LOC/DME I-SMX	APP CRS	Rwy Idg	8004
108.9	120°	TDZE	230
Chan 26		Apt Elev	261

ILS or LOC RWY 12

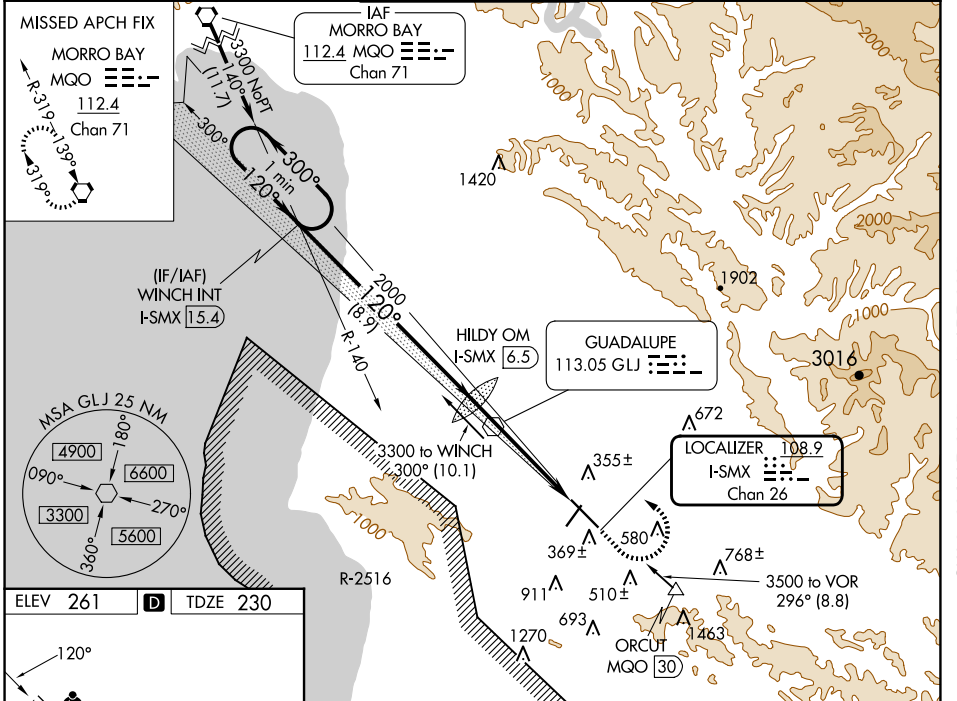
SANTA MARIA PUB/CAPT G ALLAN HANCOCK FLD (SMX)

⚠ Night Landing: Rwy 2 NA. VDP NA when using San Luis Obispo altimeter setting. When local altimeter setting not received, use San Luis Obispo altimeter setting and increase DA to 489 feet; increase all MDA 60 feet and S-LOC visibility Cat C and D to RVR 5500. For inop MALS, increase S-LOC 12 Cat C/D visibility to 1½ mile. # RVR 1800 authorized with use of FD or AP or HUD to DA; NA when using San Luis Obispo altimeter setting.

MALS

MISSED APPROACH:
Climb to 800, then climbing left turn to 5000 direct MQO VORTAC and hold.

ATIS 121.15	SANTA BARBARA APP CON* 124.15 327.8	SANTA MARIA TOWER* 118.3 (CTAF) 239.25	GND CON 121.9	UNICOM 122.95
-----------------------	---	--	-------------------------	-------------------------



ELEV 261	D	TDZE 230
----------	----------	----------

FAF to MAP 5 NM					
Knots	60	90	120	150	180
Min:Sec	5:00	3:20	2:30	2:00	1:40

CATEGORY	A	B	C	D
S-ILS 12#	430/24 200 (200-½)			
S-LOC 12	680/24	450 (500-½)	680/50	450 (500-1)
CIRCLING	860-1 599 (600-1)	1000-1 739 (800-1)	1420-3 1159 (1200-3)	1520-3 1259 (1300-3)

SW-3, 20 MAR 2025 to 17 APR 2025

SW-3, 20 MAR 2025 to 17 APR 2025