

# RNAV (GPS) RWY 10

APCH CRS	Rwy Idg	11,393
096°	TDZE	26
	Arprt Elev	41

[USA]

HUNTER AAF (KSVN)

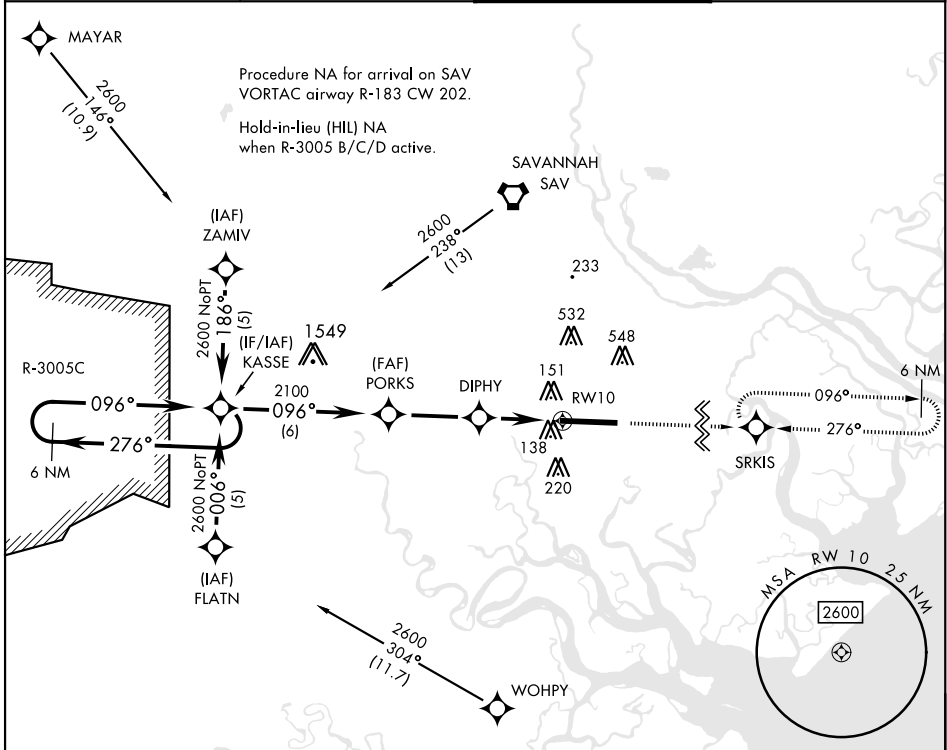
RNP APCH-GPS

RADAR required when R-3005 B/C/D active.  
 \*When ALS inop, increase CAT AB vis to 1 mile;  
 CAT CD vis to 1¼ miles.  
 \*\*Circling not authorized N of Rwy 10-28 for CAT D.



MISSED APPROACH: Climb to 2500 direct SRKIS and hold.

ATIS*	SAVANNAH APP CON*	TOWER*	GND CON*
127.525 323.125	120.4 353.775	124.975 (CTAF) 0 279.575	121.8 291.675



SE-4, 20 MAR 2025 to 17 APR 2025

SE-4, 20 MAR 2025 to 17 APR 2025

CATEGORY	A	B	C	D
	LNNAV MDA*	460-1	434	(500-1)
CIRCLING**	600-1	559 (600-1)	920-2½ 879 (900-2½)	920-2¾ 879 (900-2¾)

ELEV	41	TDZE	26
------	----	------	----

6 NM Holding Pattern	KASSE	PORKS	DIPHY	RWY10
276°	096°	3.05 NM TCH 55	3 NM to RWY10	1.1 NM to RWY10
2600	2100	1040		
		3.3 NM	3 NM	

184	182
146	TWR 97
11,393 x 195	28
096°	

# RNAV (GPS) RWY 10