

VOR/DME RWY 28

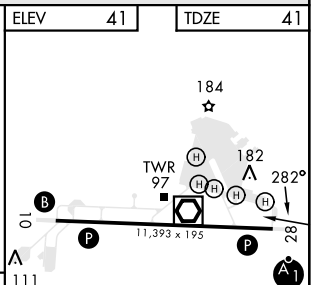
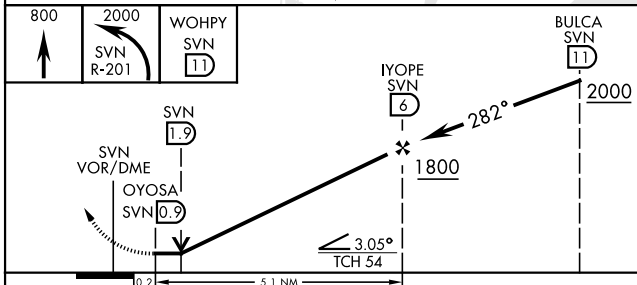
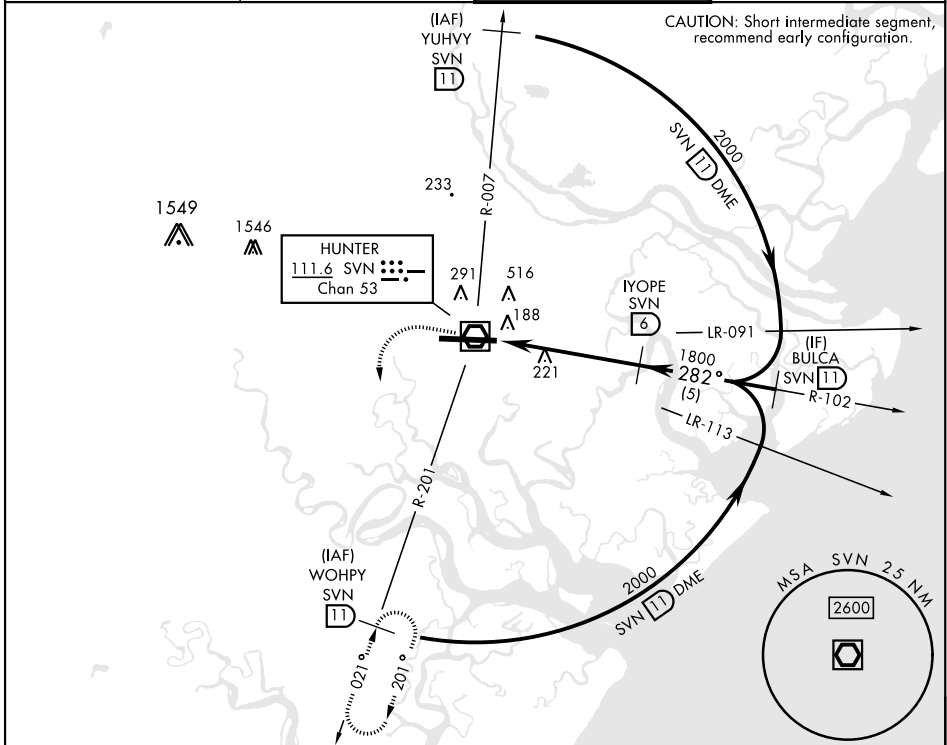
VOR/DME SVN 111.6 Chan 53	APCH CRS 282°	Rwy Idg 11,393 TDZE 41 Arpt Elev 41
---	-------------------------	--

[USA]

HUNTER AAF (KSVN)

<p>▽ * When ALS inop, increase CAT AB RVR to 55, vis to 1 mile; CAT CD vis to 1½ miles. ** Circling not authorized N of Rwy 10-28 for CAT D.</p>	<p>ALSF-1</p>	<p>MISSED APPROACH: Climb to 800, then climbing left turn to 2000 via SVN VOR/DME R-201 to WOHPY/11 DME and hold.</p>
---	---------------	---

<p>ATIS ★ 127.525 323.125</p>	<p>SAVANNAH APP CON ★ 120.4 353.775</p>	<p>TOWER ★ 124.975 (CTAF) 0 279.575</p>	<p>GND CON ★ 121.8 291.675</p>
--	--	--	---



CATEGORY	A	B	C	D	ELEV 41	TDZE 41
S-28*	580/24 539 (600-½)		580/55 539 (600-1)			
CIRCLING**	600-1 559 (600-1)		920-2½ 879 (900-2½)	920-2¾ 879 (900-2¾)	HIRL Rwy 10-28	REL Rwy 10

VOR/DME RWY 28

SE-4, 20 MAR 2025 to 17 APR 2025

SE-4, 20 MAR 2025 to 17 APR 2025