


LOC/DME I-RMT <b>110.35</b> Chan 40 (Y)	APP CRS <b>126°</b>	Rwy Idg <b>8279</b> TDZE <b>3963</b> Apt Elev <b>3967</b>
---	------------------------	---

# ILS or LOC/DME RWY 12

SCOTTSSLUFF/WESTERN NEBRASKA RGNL/WM B HEILIG FLD (BFF)

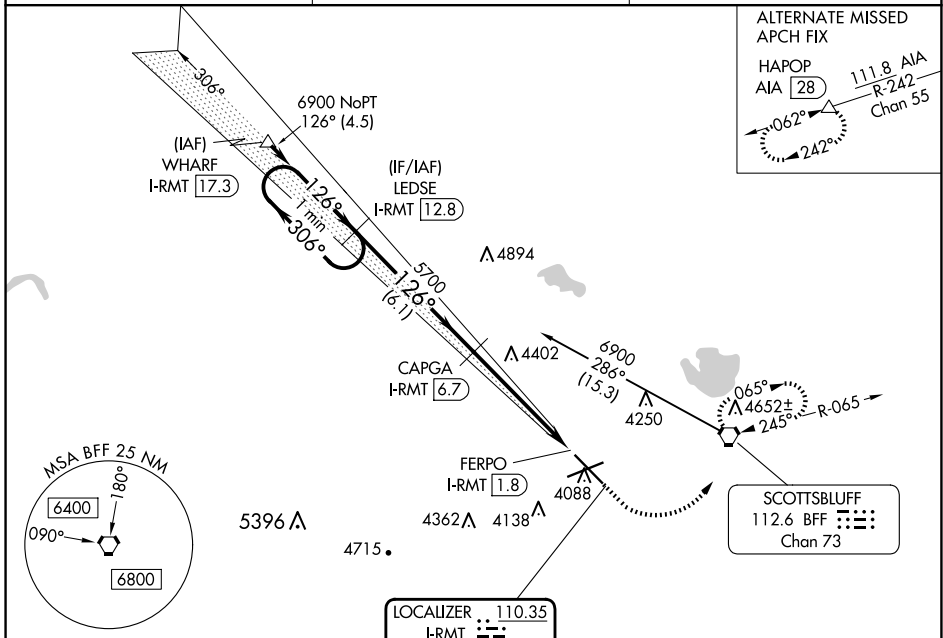
**⚠** When local altimeter setting not received, use Alliance altimeter setting and increase DA 91 feet; all MDAs 100 feet, and S-LOC 12 and Circling Cat B/C/D visibilities ¼ mile. For inoperative MALSR, when using Alliance altimeter setting, increase S-ILS 12 visibility to 1. VDP NA when using Alliance altimeter setting.

**MALSR**  **MISSED APPROACH:** Climb to 4500 then climbing left turn to 6900 direct BFF VORTAC and hold, continue climb-in-hold to 6900.

ASOS  
**121.025**

DENVER CENTER  
**127.95 338.2**

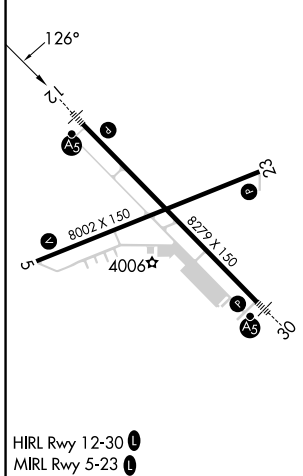
UNICOM  
**123.0 (CTAF)**



NC-2, 20 MAR 2025 to 17 APR 2025

NC-2, 20 MAR 2025 to 17 APR 2025

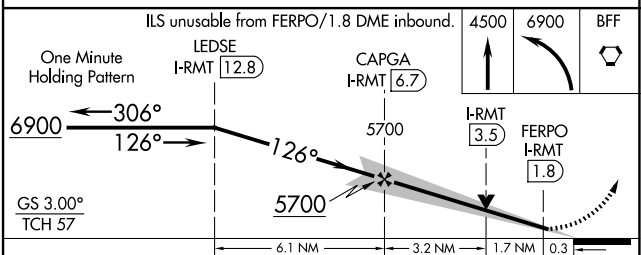
ELEV 3967 **D** TDZE 3963



HIRL Rwy 12-30 **Ⓛ**  
MIRL Rwy 5-23 **Ⓛ**

**LOCALIZER 110.35**  
I-RMT   
Chan 40(Y)

## DME REQUIRED



CATEGORY	A	B	C	D
S-ILS 12	4163-½ 200 (200-½)			
S-LOC 12	4640-½ 677 (700-½)	4640-1½ 677 (700-1½)	4640-1¾ 677 (700-1¾)	4640-1¾ 677 (700-1¾)
<b>C</b> CIRCLING	4640-1 673 (700-1)	4640-2 673 (700-2)	4740-2½ 773 (800-2½)	4740-2½ 773 (800-2½)

# ILS or LOC/DME RWY 12